

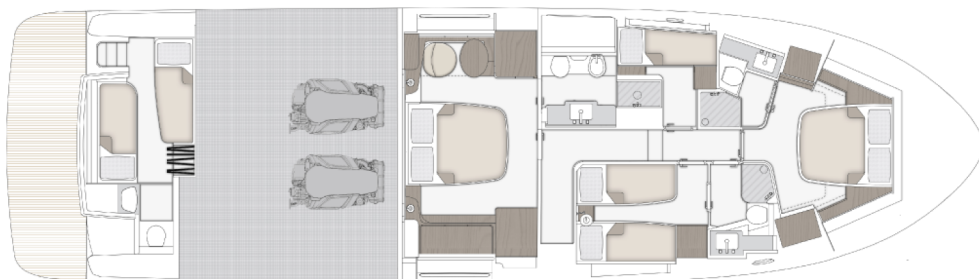
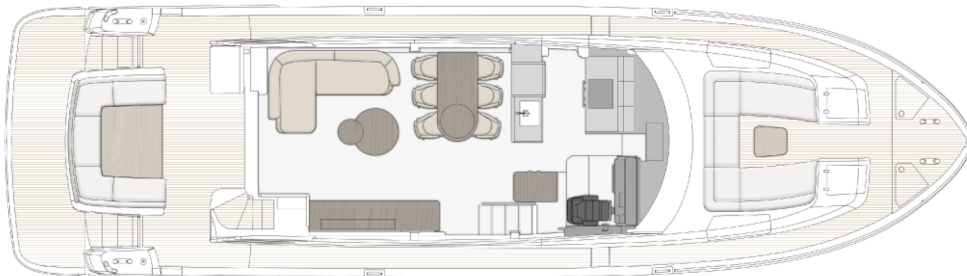
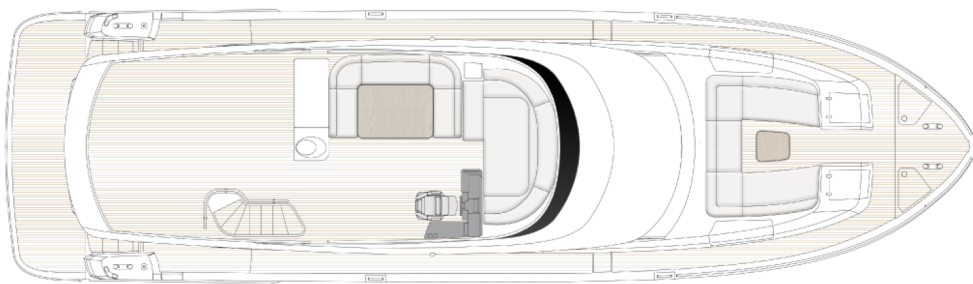


TECHNICAL SPECIFICATIONS MAGELLANO 66  
(FROM HULL 060)

---

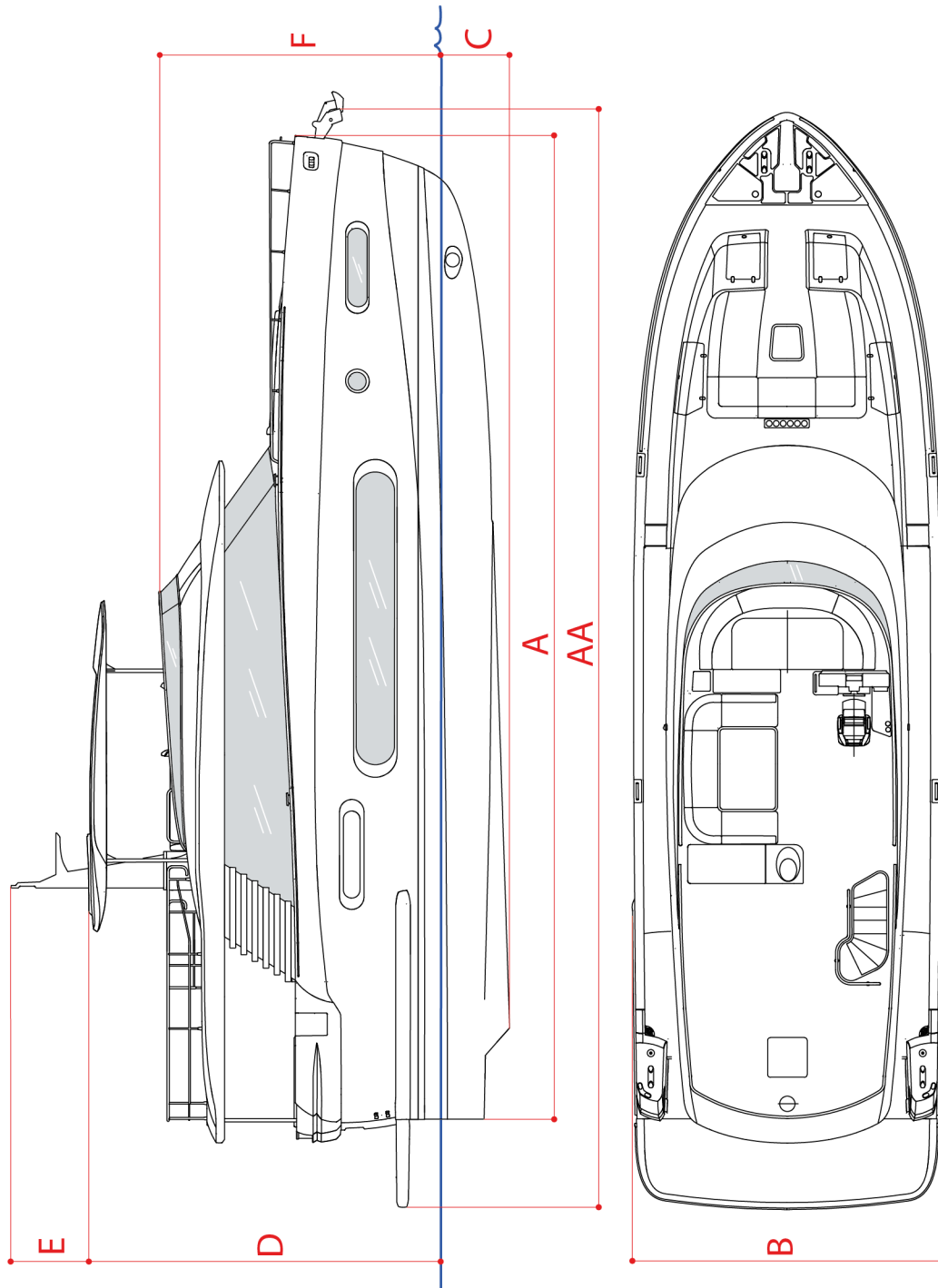
# MAGELLANO 66 (FROM HULL 060)

General plans (the imagine is to be considered as indicative only)



TECHNICAL SPECIFICATIONS MAGELLANO 66  
(FROM HULL 060)

**Dimensional diagram (figure shown for indicative purposes)**



## TECHNICAL SPECIFICATIONS MAGELLANO 66 (FROM HULL 060)

### Main characteristics

The following tables list the boat's main characteristics.

#### Dimensions and weights

(AA) Maximum length $L_{MAX}$ ISO 8666 (stern platform, pulpit overhang, bow roller, and rub-rails included)	20.15 m (66' 1")
(A) Length $L_H$ ISO 8666 (net GRP, excluding stern platform)	17.95 m (58' 11")
Waterline length $L_{WL}$ ISO 8666 (with full load)	17.16 m (56' 4")
(B) Maximum beam $B_{MAX}$ ISO 8666 (at aft protections)	5.54 m (18' 2")
(C) Draught $T_{keel}$ ISO 8666 (with full load)	1.65 m (5' 5")
Draught $T_{MAX}$ ISO 8666 (at the propellers)	1.72 m (5' 8")
(D) Hull height $H_A$ ISO 8666 (from waterline to radar arch)	6.08 m (19' 11")
(E) Height $H_{mast}$ (from radar arch to light mast)	1.19 m (3' 11")
(F) Height $H_{screen}$ (from waterline to flybridge screen)	4.84 m (15' 11")
Maximum load recommended by the manufacturer ((Max. no. people on board x 75kg) + (Max. no. people on board x 30 kg baggage))	1,470 kg (3,240.8 lb)

Loaded displacement $m_{LDC}$ ISO 8666 (boat mass with full tanks + max. no. of crew members and personal equipment + life raft, with tender)	46.4 t (45.67 tn l.)
Light displacement $m_{LCC}$ ISO 8666 (boat mass with empty tanks without crew and equipment)	36.1 t (35.53 tn l.)

#### Tank capacity

Diesel tank capacity (total)	4,500 l (1,188.8 US. liq.gal.)
Fresh water tank capacity	1,000 l (264.2 US. liq.gal.)
Black water tank capacity	500 l (132.1 US. liq.gal.)
Gray water tank capacity	300 l (79.3 US. liq.gal.)
Total capacity of tanks	6,300 l (1,664.3 US. liq.gal.)

#### Layout and structure

Cabins	3/4 + 1 crew
Beds	6/8 + 2 crew
Heads	3 + 1 (crew)
Material	GRP+ CARBON
Hull	Semi-planing, Dual-mode
Hull designer	Pierluigi Ausonio Naval Architect & Azimut yachts
Exterior designer	Style Dept. Azimut MC

## TECHNICAL SPECIFICATIONS MAGELLANO 66 (FROM HULL 060)

Interior decorator	Style Dept. Azimut MC
--------------------	--------------------------

### Approval category and capacity

CE type approval category	A
Maximum capacity	14 people

### Performance

Maximum speed (*)	24 kn
Cruising speed (*)	19 kn
Cruising speed LONG RANGE (*)	12 kn
Maximum speed consumption (*)	318 l/h (84.01 US.liq.gal./h)
Cruising speed consumption (*)	214 l/h (56.53 US.liq.gal./h)
Fuel consumption at cruising speed LONG RANGE (*)	99 l/h (26.15 US.liq.gal./h)
Range at maximum speed (*) (including 10% for fuel that cannot be pumped)	306 nmi
Range at cruising speed (*) (including 10% for fuel that cannot be pumped)	360 nmi
Range at cruising speed LONG RANGE (*) (including 10% for fuel that cannot be pumped)	490 nmi

### ► N.B.

(\*) All performance specified in the table above applies to a standard configuration boat (standard equipment installed excluding tender, jet ski, etc.) with clean hull, propellers, and rudders.

Furthermore, the performance indicated above has been defined under good sea and wind conditions (Beaufort Scale level 1, Douglas Scale level 1, ambient T < 25 °C, seawater T = 15 °C, atmospheric P = 1013.25 hPa) with two people on board, 25% fuel, and fresh, gray, and black water tanks empty.

Different or harsher sea conditions may significantly affect performance.

### GRP frame

#### CARBON MANUFACTURE TECHNOLOGY

	CARBON FIBER	FIBER-GLASS
HULL		X
DECK		X
SUPERSTRUCTURE		X
FLYBRIDGE	X	
MAST		X
HARD TOP	X	
TRANSOM/ PLATFORM	PLAT- FORM	

#### TYPE OF RESIN

	VINYL ESTER	POLYESTER
HULL SKIN COAT	X	
HULL CORE CON- STRUCTION	X	
DECK SKIN COAT	X	

## TECHNICAL SPECIFICATIONS MAGELLANO 66 (FROM HULL 060)

	VINYL ESTER	POLYESTER
DECK CORE CON- STRUCTION	X	
SUPERSTRUCTURE SKIN COAT	X	
SUPERSTRUCTURE SKIN COAT	X	
FLYBRIDGE SKIN COAT	X	
FLYBRIDGE CORE CONSTRUCTION	X	
TRAYS		X

### Tables of propulsion system component characteristics

#### Engines

Manufacturer	MAN
Model	i6 - 850 hp
Type	6-cylinder diesel engine
Max. power	2 x 625 kW

#### Reduction gears / marine gears

Manufacturer	ZF
Model	400 IV
Reduction ratio	2.458

#### Transmission

Configuration	shaft line - integrated V drive
Shaft length	4,332 mm (170.55 in)
Shaft angle	9°
Shaft diameter	75 mm (2.95 in)
Distance between centers	1,600 mm (62.99 in)
Material	Marinox 17

Support	Bronze shaft supports
Stern tube	PSS type

#### Propellers

Model	5 blades
Material	NiBrAl
Diameter	900 mm (35.43 in)

#### Steering system

Rudders	made of stain- less steel
Bow thruster	10 kW SIDE POWER 24 V

#### Flybridge

- Access from cockpit via a GRP ladder on starboard side, with teak steps and a built-in locker
- Fore sofa/sunbed area with spacious locker
- Access door in aluminum and Plexiglas
- Stainless steel handrails and pulpit
- Wheelhouse with one seat on starboard side.
- Steering wheel
- Fixed table in teak, with stainless steel support, for eight people
- Sofa, with open compartments
- Flybridge screen in plexiglas with frame in aluminum painted black
- GRP port cabinet, with washbasin, 50 liter (1,76 cu.ft) fridge, and storage
- Aft sunbed area
- GRP mast for housing:
  - navigation and riding lights
  - VHF aerial
  - horn
  - flag pole

## TECHNICAL SPECIFICATIONS MAGELLANO 66 (FROM HULL 060)

---

- shower head + shower mixer tap for hot and cold water
- Flybridge dashboard consisting of:
  - marine gear - engine levers
  - BRONZE series electronic navigation instruments
  - 7" engine control display
  - engine START/STOP controls
  - Bow thruster controls
  - general boat alarm indication integrated in the Raymarine display
  - bow winch controls
  - horn controls
  - auxiliary / spare controls
  - trim tab position indicators and controls
  - manual depth searchlight, 12 V
  - magnetic compass

---

► **N.B.**

Electronic navigation instruments: see relevant paragraph

---

### Bow / Walk arounds / Deckhouse

#### Bow

- Chain washing pump
- Self-draining anchor chain locker and divisions for housing eight fenders Ø 30 cm (11.8 in)
- 40 kg (88.2 lb) steel anchor
- Galvanized steel anchor chain, diam. 12 mm (0.47 in), L = 75 m (246' ¾")
- Stainless steel bow roller and bow shield
- 2300 W anchor winch
- Two stainless steel cleats
- Two stainless steel bow chocks-hawses
- Fore sofa/sunbed area with spacious lockers

#### Walk arounds

- Four stainless steel amidships cleats on the gunwale

- Handrails near cockpit
- Teak gunwale
- Stainless steel pulpit at the bow
- One fresh water refill cap, on walk around
- One black water suction plug, on walk around
- Water drainage on walk arounds
- Two refueling plugs located on the sides of the deckhouse

#### Deckhouse

- Windows in tempered glass, glued to the superstructure
- Deckhouse with front sunguard visor for better protection against sunlight and heat. Also useful in bad weather conditions, both when under way and when moored
- Side windows in Europa gray. Front windows in a neutral shade
- One side door, with window, for accessing the walk arounds, located on port side of galley area
- Windscreen wipers with washer
- Red/green navigation lights

### Cockpit and platform

#### Cockpit

- Cockpit floor in teak
- Flybridge access ladder in GRP, with steps in teak
- Access to platform via two side decks
- Stainless steel/Plexiglas gates to protect access to stern platform
- Saloon door in stainless steel with two sliding panels
- six-seater C-shaped cockpit sofa, with cushions and lockers underneath
- Crystal with teak flat arch on the bench aft backrest
- Access to the engine room from the door

## TECHNICAL SPECIFICATIONS MAGELLANO 66 (FROM HULL 060)

---

- Scuppers on cockpit bulwarks (self-draining)
- Two cleats with stainless steel chocks in cockpit
- Switch panel (main and emergency switches) in starboard locker
- LED spotlights on cockpit ceiling, with dimmer

### Platform

- LED spotlights in platform area
- Foldaway swimming ladder (manually operated) under door
- Manual shower head with hot and cold water
- Floor in teak
- Two cleats at the aft hull end
- INSTALLABLE TENDER (OPT):
  - MAXIMUM DIMENSIONS OF TENDER - PLATFORM: 4.10 x 1.785 m (13' 5.4" x 5' 10.3")
  - MAXIMUM DIMENSIONS OF TENDER - FLYBRIDGE: 2.75 x 1.50 m (9' x 4' 11")
  - RECOMMENDED TENDER - PLATFORM: Pirelli J39
  - MAXIMUM INSTALLABLE PLATFORM LOAD: 635 kg\* (1399.94 lb\*), (the above value considers 435 kg (959.01 lb) of water toys + 200 kg (440.92 lb) for operators and various accessories)

---

### ► N.B.

\* liftable load with tender positioned as recommended by the boatyard.

---

### Wheelhouse

- Located in forward area of starboard side on main deck, in raised position
- Adjustable pilot seat (electrical, lifting only)
- Stainless steel handrail
- Steering wheel

- Housing for DC/AC electric panel
- Dashboard consisting of:
  - two 5" multifunction displays, with diesel level indication
  - BRONZE series electronic navigation instruments
  - engine starting display
  - Chain washing pump controls
  - Battery parallel controls
  - alarm mute controls
  - steering area light controls
  - red spotlight control for night-time navigation
  - Windscreen wiper and washer controls
  - bow winch controls
  - horn controls
  - auxiliary / spare controls
  - Trim tab position indicator and controls
  - Bow thruster controls
- Control and monitoring/alarm panel integrated in the Raymarine displays:
  - bilge pump activation
  - gray water tank level
  - display for electric energy source conditions
  - timed control for draining gray water tank
  - timed control for draining holding tank
  - Fresh water level gage
  - warning for tenderlift submersed with engines running
  - crew cabin door open alarm
  - high temperature of engine gas raisers
  - shore power connection active
  - engine room ventilation controls
  - navigation light and riding light controls

---

### ► N.B.

Electronic navigation instruments: see relevant paragraph

---

## TECHNICAL SPECIFICATIONS MAGELLANO 66 (FROM HULL 060)

---

### Saloon / Dinette

#### Saloon

- Wood essence furniture
- Carpeted floor with insulating mat underneath
- Saloon/dinette/galley floors all on one level
- One "L" shaped sofa, on aft port side
- Lounge table
- Long cabinet on starboard side, with drawers and shelves, fitted to house a TV-lift system
- Saloon door curtain in fabric
- Roman blinds for side windows, as far as the dinette area
- LED lighting, with dimmer
- Access door to the engine room for engine unloading

---

#### ► N.B.

For details about alternative versions and layouts, refer to the Optionals list

---

#### Dinette

- Dinette area at center of main deck
- Carpeted floor
- Access ladder on starboard side, leading below deck

#### Galley

- Located in forward part of saloon, on port side
- Low cupboard for crockery on starboard side (behind steering system)
- refrigerator-freezer with total capacity of 220 liters (7.77 cu.ft)
- Black HPL worktop
- Hot/cold mixer tap
- Stainless steel sink
- Extractable waste bin

- Cabinet with shelves, storage area and rubbish bin
- Ceramic glass four-hob range with silicone pot holder
- Extraction hood
- Microwave oven
- Wall unit
- Laminated floor in the galley area

### Corridor / Stairs

- LED walkway lights on steps
- Handrail on stairs
- Cabinet for accessories below the stairs

### Owner's cabin

- Amidships, "full beam"
- Direct access to head
- Carpeted floor
- Double bed positioned longitudinally, with storage area (separate compartments) underneath accessed by lifting the bed base
- Mattress, pillows and bedspread
- Bedside tables with storage compartments
- Fabric headboard wall
- Vanity unit with seat positioned against port bulwark
- Low longitudinal chest of drawers, on starboard side
- Two large panoramic windows with openable portlights
- Wooden Venetian blinds
- Wardrobes with hanger bar and shelves, on port and starboard sides
- 230 V AC sockets
- LED lighting
- Two lamps at the sides of the bed

## TECHNICAL SPECIFICATIONS MAGELLANO 66 (FROM HULL 060)

---

### Owner's head

- Located on port side, with direct access from the cabin
- Washbasin and hot/cold water mixer tap
- Washbasin top in Print HPL laminate, with storage compartments
- Mirror
- Cabinet under the washbasin with panels (towel rail) on shower side and towards the cabin
- Window with oval, openable portlight
- Aluminum Venetian blind
- Laminated floor
- Separate shower enclosure with tempered glass door
- Shower support with adjustable height + shower head on ceiling, with mixer tap/flow diverter
- Shower compartment lighting
- Air extractor in the shower enclosure
- High gray water level alarm
- Tecma toilet with control panel and visual alarm for full tank
- 230 V AC socket
- Emergency exit (towards main deck) in ceiling
- accessory set consisting of:
  - two hanger bars
  - two towel-holder bars
  - one soap holder
  - one roll holder
  - one toilet brush

### VIP cabin

- Located at the bow of the below deck area
- Direct access to private head, on port side
- Double bed with tip-up structure for accessing the locker below
- Mattress, pillows and bedspread
- Carpeted floor

- Cupboard with shelves (port side)
- Wardrobe with hanger bar, mirror and shelves (starboard side)
- Wall cabinets on the bulwark
- Shelves - bedside table
- Shelf with storage compartments next to bedside table
- Two LED wall lights-reading lights, at sides of headboard
- Windows on both sides, with openable oval portlights
- Wooden Venetian blinds
- Hatchway on ceiling, with foldaway mosquito net and blind
- 230 V AC sockets

### VIP head

- Located on port side, with direct access from VIP cabin
- Washbasin top in Print HPL laminate
- Washbasin
- Hot/cold mixer tap
- Cabinet with door under the washbasin
- Wall cabinet
- Mirror
- Tecma toilet with control panel (drainage/no drainage, with visual alarm for full tank)
- Separate shower enclosure with tempered glass door
- Shower support with adjustable height and thermostatic mixer tap
- Shower compartment lighting
- Electric air extractor in the shower enclosure
- Openable round portlight on bulwark, diam. 300 mm (11.8 in)
- Aluminum Venetian blind
- Laminated floor
- High gray water level alarm
- LED lighting on ceiling
- 230 V AC socket

## TECHNICAL SPECIFICATIONS MAGELLANO 66 (FROM HULL 060)

---

- accessory set consisting of:
  - two hanger bars
  - one towel-holder bar
  - one soap holder
  - one roll holder
  - one toilet brush

### Guest cabin (third cabin)

- Located on starboard side of below deck area
- Access from corridor
- Two single beds, side-by-side
- Mattresses, pillows and bedspread
- Storage compartments beneath the beds
- Bedside table between the beds, with storage compartment
- Window with oval, openable portlight
- Wooden Venetian blind
- Wardrobe with hanger bars, shelves (headboard mirror)
- Wall cabinet
- Overhead spotlights and LED reading light
- 230 V AC socket

### Guest head

- Located on starboard side, with access from guest cabin and corridor
- Washbasin top in Print HPL laminate
- Washbasin
- Hot/cold mixer tap
- Cabinet with door under the washbasin
- Wall unit with door
- Mirror
- Tecma toilet with control panel (drainage/no drainage, with visual alarm for full tank)
- Openable round portlight on bulwark, diam. 300 mm
- Aluminum Venetian blind

- Separate shower enclosure with tempered glass door
- Shower support with height adjustment and hot/cold mixer tap
- Shower compartment lighting
- Air extractor in the shower enclosure
- Laminated floor
- High gray water level alarm
- 230 V AC socket
- accessory set consisting of:
  - two hanger bars
  - one towel holder bar
  - one roll holder
  - one toilet brush holder
  - one toilet brush

### Fourth cabin

#### Storeroom / Closet (STANDARD configuration)

- Located on port side of cabin area, accessed from the corridor
- Print laminated furniture
- Storage compartments
- LED lighting
- Window with portlight
- Aluminum Venetian blind
- Carpeted floor
- Electric and hydraulic fittings for air conditioning circuit
- One 230 V socket

#### Two-bed cabin (OPT configuration)

- Wood essence furniture
- One bed or two bunk beds
- Mattresses, pillows and bedspread
- Two LED reading lights
- 230 V AC sockets
- Cupboard with shelves
- Storage compartments
- Carpeted floor
- Window with portlight
- Aluminum Venetian blind

## TECHNICAL SPECIFICATIONS MAGELLANO 66 (FROM HULL 060)

---

### Crew room

- 12 V DC

### Crew cabin

- Access via ladder with door on port side (access from platform)
- Two single beds (one foldable)
- Mattresses, pillows and bedspread
- Two wardrobes with hanger bars
- Shelves
- Oval, openable portlight with blind
- Panoramic window facing towards stern platform
- Cloth blind on the panoramic window
- Carpeted / GRP floor
- Natural ventilation duct

- Electric panels with switches and instruments in engine room, saloon, and steering area, and junction boxes in the various areas
- Button for temporary parallel emergency activation of service/start battery sets
- Power circuit breakers to protect the input lines (shore and genset)

### Galvanic current insulation

- Zinc anodes

### Generator

- One 5 kW - 230 V generator in engine room

### Crew head

- Access from crew cabin
- Washbasin with hot and cold mixer tap
- Wall cabinet
- Mirror
- Cabinet
- Tecma toilet with control panel (drainage/no drainage), with visual alarm for full tank
- Non-slip floor
- Shower compartment lighting
- Oval, openable portlight with blind
- One 230 V socket
- accessory set consisting of:
  - two hanger bars
  - one toothbrush holder
  - one roll holder
  - one toilet brush
- Electric extraction duct

### Shore power sockets

- One shore power socket near the cockpit. Activation occurs through remote control switch

### Batteries

- Services: six batteries 95 Ah - 12 V DC, AGM type
- Engines: four batteries 90 Ah - 12 V DC, AGM type
- Generator: one battery 70 Ah - 12 V DC, AGM type
- Bow thruster: four batteries 70 Ah - 24 V DC
- 24 V - 80 A battery charger: Services and engines / thruster
- 12 V - 12 A battery charger: Generator
- Battery cut-out switches

### Electric system

#### Main characteristics

- Electricity supply powered from shore power socket or generator
- Onboard voltages:
  - 230 V - 50 Hz AC
  - 24 V DC

### Lights and sockets

- AC sockets: type B plug sockets, standard Italian socket. Other socket standards are available for the specific destination market.
- DC sockets: 12 V cigarette lighter type (flybridge)

## TECHNICAL SPECIFICATIONS MAGELLANO 66 (FROM HULL 060)

- USB charging socket in the internal wheelhouse
- 24 V lighting (LED)
- 230 V socket in engine room
- LED lighting system, with STD dimmers in saloon and cockpit
- 24 V watertight external lights (LED)

### Electronic navigation instruments

- For STD equipment, see “flybridge dashboard equipment” and “internal dashboard equipment” paragraphs
- For a detailed list of alternative/additional equipment available, please refer to the Optionals price list

#### ► N.B.

The electronics are constantly being updated, therefore the indicated configuration may be subject to changes.

### Bilge system

- One centrifugal electric pump 24 V with automatic and manual controls, located in the aft compartment
- One centrifugal electric pump 24 V with automatic and manual controls, located in engine room
- One centrifugal electric pump 24 V with automatic and manual controls, located in the cabin area
- One low-flow rate automatic 24 V electric pump, in the cabin area
- Warning for pump operation and high level alarms in the monitoring system
- One manual pump with crossover valve, two suction points, beneath starboard guest cabin
- One manual pump, activated in the cockpit, with crossover valve and two suction points in the engine room

- One manual pump activated from cockpit, with crossover valve, one suction point in the aft compartment
- Emergency engine bilge drainage via intake connected to the crossover valve of the seawater cooling circuit of an engine

### Fire extinguishing system

- Extinguisher gas cylinder, with mechanical handle activation, in the engine room
- Emergency engine/generator switch-off control in cockpit

### Fuel system

- Two tanks in 5754 aluminum alloy, 2250 liters (594 US.liq.gal.) each, in the engine room
- Tank interconnection with check valves
- Single electronic level sensor on starboard tank
- Visual level gage on port tank
- Two refueling plugs on sides of deck-house, equipped with backflow devices
- Two breathers on bulwarks
- Diesel check solenoid valves for engines and generator (with ignition switched on) with manual bypass
- Racor single separator/settling filters
- Fuel drawing tap on both tanks

### Fresh water system

- Two tanks, total capacity 1000 liter (264 US.liq.gal.)
- Pressure pump
- System shut-off via valves and manifolds
- Toilet flushing with fresh water
- 80-liter (21.12 US.liq.gal.) water heater with 1200 W resistor, with thermostatic mixer valve, to guarantee greater autonomy

## TECHNICAL SPECIFICATIONS MAGELLANO 66 (FROM HULL 060)

---

- Level gage integrated in the boat monitoring system
- Water level sensor with pressure pump blocking if there is no water
- Hot and cold water lines in heads, galley and cockpit
- Cold water line in engine room
- Hot and cold water line for flybridge sink and shower on GRP mast
- Embarking point on deck walk around (starboard side)

### Black water system

- TECMA toilet with macerator built into the base
- 500-liter (132 US.liq-gal.) collection tank beneath cabin area
- TECMA control panels with an indicator of the operating status, system drainage interlocking indicator if the tank is full.
- Level gage integrated in the boat monitoring system
- Container drainage via intake vent on deck (port side)
- Submersed discharge via specific line, with timed electric pump on container outlet

### Gray water system

- 300-liter (79.2 US.liq.gal.) collection tank for drainage from showers, wash-basins, and sinks, beneath cabin area
- Tank drainage with automatic or manual timed control
- Level gage and alarm integrated in the boat monitoring system
- Indicator lights and audible alarm in heads, for high gray water level
- Shower drainage pipes with drain-tap and removable filter to facilitate cleaning
- Level sensor with automatic pump and alarm control from the wheelhouse

- Water drainage via manifolds through 24 V membrane pump

### Seawater system

- Engine cooling system: includes seawater intakes with filter and valve (one per engine)
- Generator cooling system: includes one seawater intake with filter and valve

### Ventilation/extraction

- Engine room:
  - Natural ventilation via openings on the bulwarks, with external stainless steel grids and anti-mist profiles (that trap direct water spray and vaporised water from the outside)
  - Ventilation: two 24 V extractors connected to engine starting keys, with automatic and manual controls

### Other systems

- Steering system: electric, servo-assisted.
- Trim tab system: consisting of two AISI 316 blades, operated by a hydraulic cylinder, each controlled by a dedicated hydraulic control unit
- Engine gas exhaust system:
  - "damp" gas exhaust with cooling water injection, with thermally insulated stainless steel manifolds and GRP structural mufflers
  - submerged gas exhaust vent windows and minimum bypass on hull sides
  - acoustic and visual alarm for high exhaust gas temperature on the monitoring system
- Engine room (further details):
  - routine engine room access via door in cockpit

## TECHNICAL SPECIFICATIONS MAGELLANO 66 (FROM HULL 060)

---

- access to the engine room for engine removal operations via hatches below the saloon floor
- soundproofing and sound-absorbing paneling
- engine room lighting provided by fixed LED lamps and one portable lamp
- through-hull fittings for propeller shaft with mechanical ring seal in graphite, PSS type
- bronze fittings for seawater intakes and outlets beneath the waterline

### **Air conditioning system (OPT)**

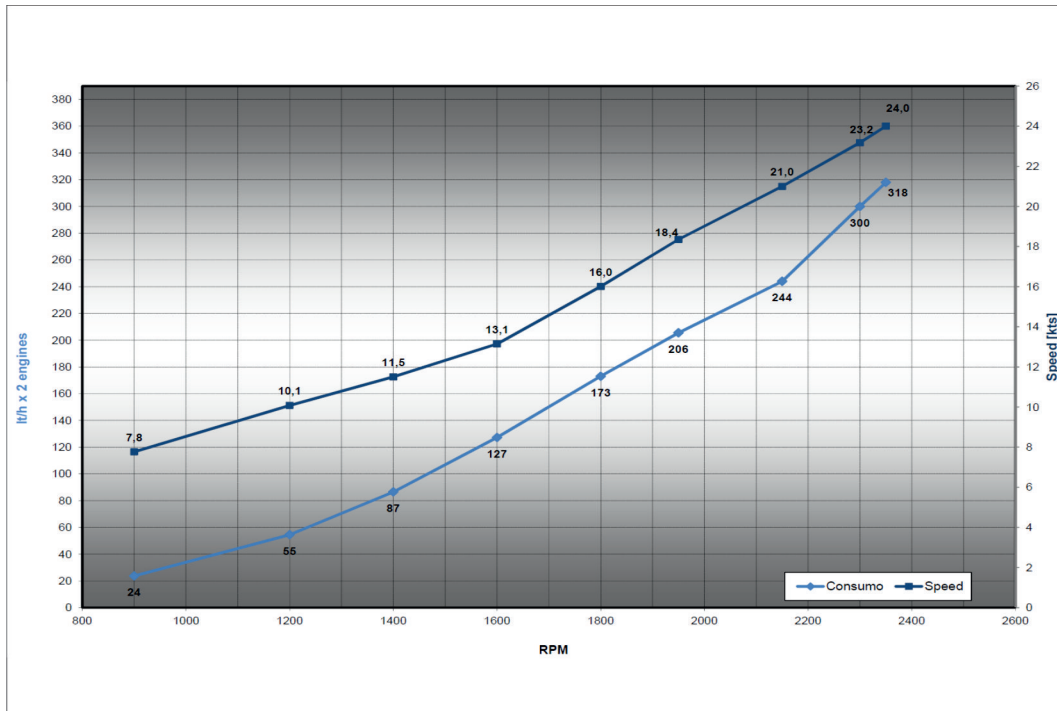
- Water system, WORLD SPEC version
- One compressor in engine room, total 92,000 BTU
- One seawater pump with relevant intake
- Each area has its own independent control panel
- Two adjustable and closable delivery outlets in steering area
- Fancoil also in the fourth cabin (closet)

### **Equipment**

- One telescopic boat hook
- Five mooring lines
- Fender lines: 24 m (78' 9")
- One anchor chain stopper
- Eight fenders
- eight black fender covers
- One Owner's manual
- One AZIMUT document folder
- One AZIMUT warranty service booklet
- One set of stainless steel cutlery
- One set of porcelain plates
- One set of glasses
- Four floating key rings
- One large bag with logo for manuals
- One remote control holder with logo
- One stainless steel scheduled maintenance kit

TECHNICAL SPECIFICATIONS MAGELLANO 66  
(FROM HULL 060)

**Annex 2 - Performance / consumption chart**



## TECHNICAL SPECIFICATIONS MAGELLANO 66 (FROM HULL 060)

---

### **NB**

The contents of this document are for informational purposes only and do not constitute an opinion or guarantee regarding the characteristics of the pleasure craft described herein.

Azimut|Benetti S.p.A. therefore does not guarantee the accuracy, completeness or updating of the information and specifications contained in this document and, in particular, declares that certain details and technical specifications described herein may differ for the models available.

Therefore, Azimut|Benetti S.p.A. does not make any guarantee regarding the use of the content, details, specifications or information contained in this document in terms of correctness, accuracy, adequacy, utility, timeliness, reliability, in any case, within the limits established by law.

