

25M

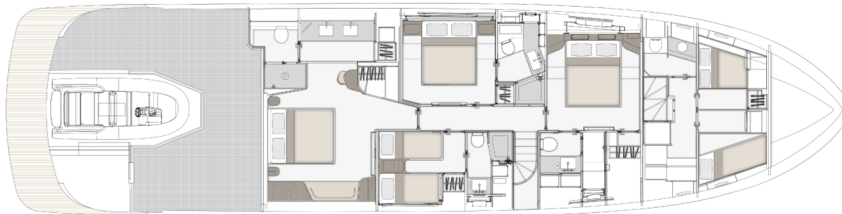
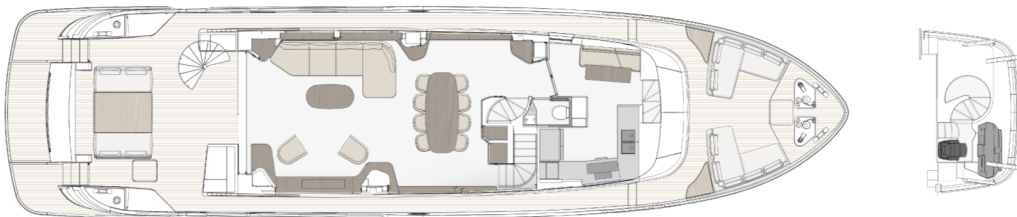
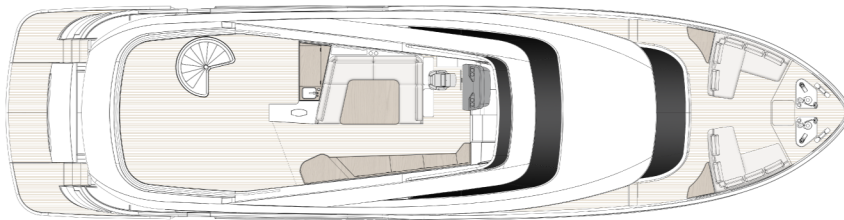
MAGELLANO 25M

M

TECHNICAL SPECIFICATIONS MAGELLANO 25M
(FROM HULL 024)

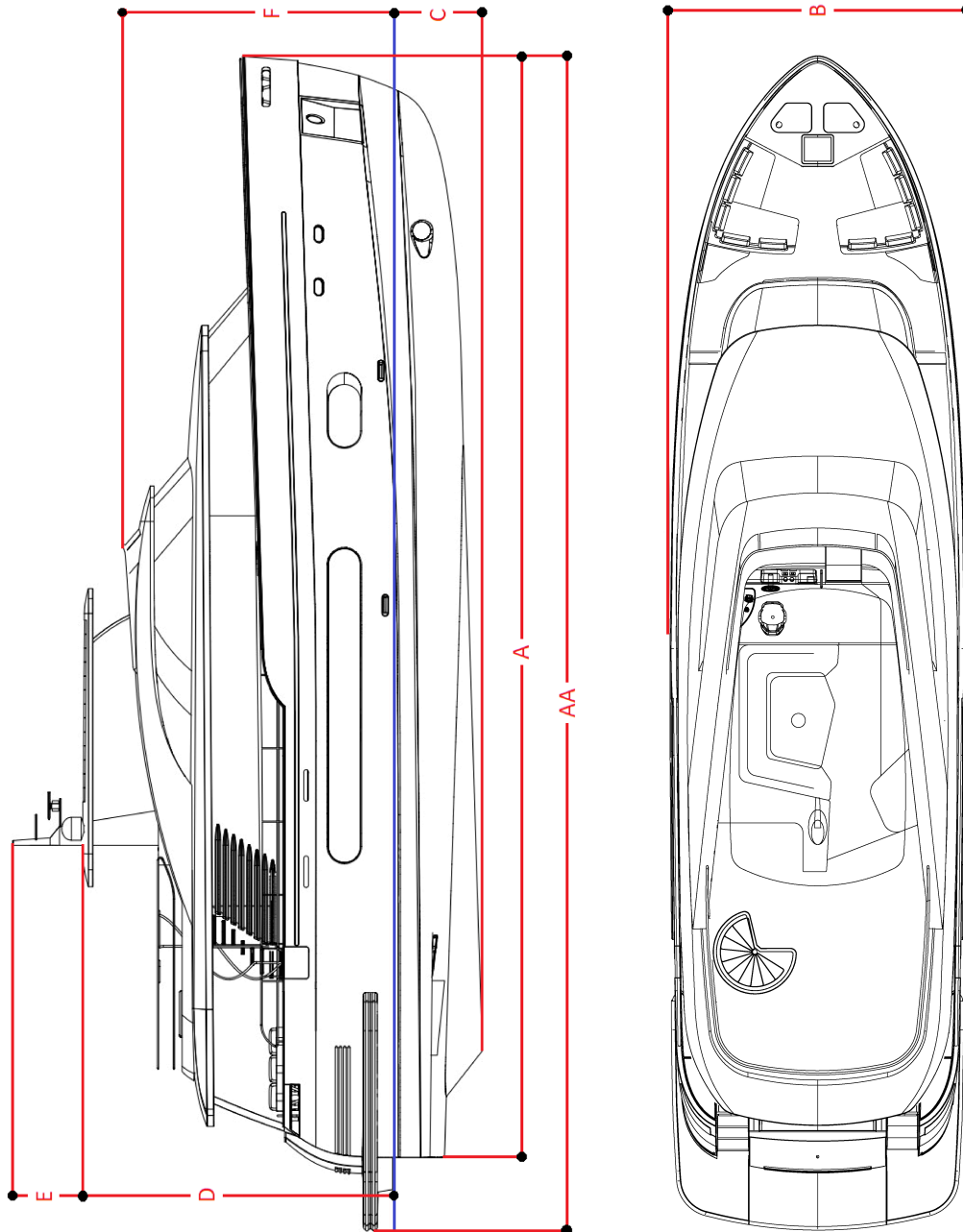
MAGELLANO 25M (FROM HULL 024)

General plans (the imagine is to be considered as indicative only)



TECHNICAL SPECIFICATIONS MAGELLANO 25M
(FROM HULL 024)

Dimensional diagram (figure shown for indicative purposes)



TECHNICAL SPECIFICATIONS MAGELLANO 25M (FROM HULL 024)

Main characteristics

The following tables list the boat's main characteristics.

Dimensions and weights

| | |
|--|--------------------------|
| (AA) Length overall L_{MAX} ISO 8666 (stern platform, pulpit overhang, bow roller, and rub-rails included) | 25.22 m (82' 9") |
| (A) Hull length L_H (excluding platform) | 23.96 m (78' 7") |
| Waterline length L_{WL} ISO 8666 (with full load) | 22.94 m (75' 3") |
| (B) Maximum beam B_{MAX} ISO 8666 (midship) | 6.30 m (20' 8") |
| Draught T_{keel} ISO 8666 of canoe body (with full load) | 1.50 m (4' 11") |
| (C) Draught T_{MAX} ISO 8666 (to skeg) | 1.90 m (6' 3") |
| (D) Hull height H_A ISO 8666 (from waterline to radar arch) | 6.61 m (21' 8") |
| (E) Height H_{mast} (from the upper plane of the hard top to the lights mast) | 1.52 m (4' 12") |
| (F) Height H_{screen} (from waterline to flybridge screen) | 5.82 m (19' 1") |
| Maximum load recommended by the manufacturer ((Max. no. people on board x 75kg) + (Max. no. people on board x 30 kg baggage)) | 1,680 kg (3,703.8 lb) |

| | |
|--|---------------------------|
| Loaded displacement m_{LDC} ISO 8666 (boat mass with full tanks + max. no. of crew members and personal equipment + life raft, with tender) | 87.50 t (86.118 tn l.) |
| Light displacement m_{LCC} ISO 8666 (boat mass with empty tanks without crew and equipment) | 70.50 t (69.387 tn l.) |

Tank capacity

| | |
|------------------------------|------------------------------------|
| Diesel tank capacity (total) | 8,100 l (2,139.8 US. liq.gal.) |
| Fresh water tank capacity | 1,500 l (396.3 US. liq.gal.) |
| Black water tank capacity | 750 l (198.1 US. liq.gal.) |
| Gray water tank capacity | 750 l (198.1 US. liq.gal.) |
| Total capacity of tanks | 11,000 l (2,905.9 US. liq.gal.) |

Layout and structure

| | |
|----------|--|
| Cabins | 4 + 2 crew cabins |
| Beds | 8 + 3 crew cabins |
| Heads | 5 + 1 crew cabins |
| Material | GRP+ CARBON |
| Hull | Dual Mode Semi-planing, double chine with skeg |

TECHNICAL SPECIFICATIONS MAGELLANO 25M (FROM HULL 024)

| | |
|-------------------|---|
| Hull designer | Pierluigi Ausonio Naval Architect & Azimut yachts |
| Exterior designer | Ken Freivokh |
| Interior designer | Vincenzo De Cotiis |

Approval category and capacity

| | |
|---------------------------|-----------|
| CE type approval category | A |
| Maximum capacity | 16 people |

Performance

| | |
|---|-------------------------------|
| Maximum speed (*) | 24 kn |
| Cruising speed (*) | 18 kn |
| Cruising speed LONG RANGE (*) | 12 kn |
| Maximum speed consumption (*) | 535 l/h (141.3 US.liq.gal./h) |
| Cruising speed consumption (*) | 341 l/h (90.08 US.liq.gal./h) |
| Fuel consumption at cruising speed LONG RANGE (*) | 138 l/h (36.45 US.liq.gal./h) |
| Range at maximum speed (*) (excluding 10% for fuel that cannot be pumped) | 327 nmi |
| Range at cruising speed (*) (excluding 10% for fuel that cannot be pumped) | 385 nmi |
| Range at cruising speed LONG RANGE (*) (excluding 10% for fuel that cannot be pumped) | 633 nmi |

► N.B.

(*) All performance specified in the table above applies to a standard configuration boat (standard equipment installed excluding tender, jet ski, etc.) with clean hull, propellers, and rudders.

Furthermore, the performance indicated above has been defined under good sea and wind conditions (Beaufort Scale level 1, Douglas Scale level 1, ambient T < 25 °C, seawater T = 15 °C, atmospheric P = 1013.25 hPa) with two people on board, 25% fuel, and fresh, gray, and black water tanks empty.

Different or harsher sea conditions may significantly affect performance.

► N.B.

The addition of stabilizing fins leads to a further reduction of 1 knot.

GRP frame

MATERIAL

| | CARBON FIBER | FIBER-GLASS |
|-------------|--------------|-------------|
| HULL | | X |
| DECK | | X |
| DECKHOUSE | | X |
| FLYBRIDGE | X | |
| MAST | | X |
| T-TOP | X | |
| GARAGE DOOR | | X |

TYPE OF RESIN

| | VINYL ESTER | POLYESTER |
|------|-------------|-----------|
| HULL | X | |

TECHNICAL SPECIFICATIONS MAGELLANO 25M (FROM HULL 024)

| | VINYL ESTER | POLYESTER |
|-----------------------------|----------------|-----------|
| DECK | X | |
| DECKHOUSE | X | |
| SMALL DECKHOUSE | X | |
| EXTERNAL DETACHED PIECES | X | |
| INTERNAL DETACHED PIECES | | X |
| TRAYS | | X |

Tables of propulsion system component characteristics

Engines

| | |
|--------------|--------------------------|
| Manufacturer | MAN |
| Model | V12 - 1400 |
| Type | Diesel engine |
| Max. power | 2 x 1029 kW (1400 hp) |

Reduction gears / marine gears

| | |
|-----------------|--------|
| Manufacturer | ZF |
| Model | 2000V |
| Reduction ratio | 2.92:1 |

Transmission

| | |
|--------------------------|-------------------------------------|
| Configuration | V-Drive |
| Shaft length | 4,280 mm (168.5 in) |
| Shaft angle | 9.5° |
| Shaft diameter | 85 mm (3.35 in) |
| Distance between centers | 1,800 mm (70.87 in) |
| Shaft material | Duplex F51 |
| Shaft support | Bronze- manganese alloy (OTS) |
| Stern tube | PSS |

Propellers

| | |
|----------|------------------------|
| Model | 5 blades |
| Material | NiBrAl |
| Diameter | 1,050 mm (41.34 in) |

Steering system

| | |
|---------------------------|------------------------------|
| Rudders | made of stain- less steel |
| Bow thrusters (Hydraulic) | Quick BTH386- 580KGF |

Tables of deck fittings characteristics

Anchor

| | |
|----------|---------------------|
| Quantity | Two |
| Weight | 97 kg (213.8 lb) |
| Material | steel |

Anchor chain

| | |
|---------------|---------------------|
| Quantity | Two |
| Diameter | 12 mm (0.47 in) |
| Length (each) | 135 m (442' 11") |
| Material | galvanized steel |

Hawse plate

| | |
|-----------|-------------------------------|
| Quantity | Two |
| Thickness | 5 mm (0.2 in) |
| Material | AISI 316 stain- less steel |

Anchor winch

| | |
|-------------------------|--------|
| Quantity | Two |
| Motor power (hydraulic) | 3600 W |

TECHNICAL SPECIFICATIONS MAGELLANO 25M (FROM HULL 024)

| | |
|--------------|----------------------|
| Make & Model | QUICK - RY6 HYDRO |
|--------------|----------------------|

Mooring capstan

| | |
|--------------------------|----------------------|
| Quantity | Two |
| Motor power (electrical) | 2300 W |
| Engine voltage | 24 V |
| Make & Model | QUICK - TUM- BLER |

chocks

| | |
|------------------|-----------------------|
| Quantity - bow | Two (with rollers) |
| Quantity - stern | Two (with rollers) |
| Material | stainless steel |

Cleats

| | |
|---|-----------------|
| Quantity - bow | Two |
| Quantity - midship | Two |
| Quantity - stern, on mooring station | Two |
| Quantity of stern edges for cross member | Two |
| Material | stainless steel |

Flybridge

- Access to flybridge from the cockpit, through external spiral steps in steel with teak steps and one handrail, on port side, and from the internal wheelhouse through a companion located at the center of the boat, next to the external dashboard
- Flybridge GRP flooring with anti-slip
- Anti-slip also on fore plane of flybridge in front of the internal dashboard
- Plexiglas flybridge screen with stainless steel frame
- Antenna mast in composite material

- Dining area: one "C" shaped sofa with backrest and removable cushions for outdoors (along the port bulwark)
- Fix table (dining area), with fix bases
- Storage cabinet along the starboard bulwark
- Flybridge bar cabinet ("L" shaped with mast resting on the longitudinal element) provided with:
 - Sink built into cabinet with retractable water tap
 - Fridge
 - Waste bin
- Control station: single pilot seating area on port side
- Flybridge dashboard consisting of:
 - MAN 6.5" display for engines
 - Raymarine electronic navigation instruments
 - Engine throttles
 - Steering wheel
 - Communication systems (VHF)
 - Bow thruster controls
 - audible alarm controls
 - Trim tab (interceptors) controls
 - 12 V socket
 - Chain meter counter
- Scuppers
- Navigation lights
- Manual searchlight
- Two speakers

► N.B.

Electronic navigation instruments: see relevant paragraph.

Bow

- Chain locker accessible through central hatch, with internal lighting and drainage

TECHNICAL SPECIFICATIONS MAGELLANO 25M (FROM HULL 024)

- Fenders storage in deck lockers (under the deckhouse windows and in the chain locker)
- Chain washing system
- Two "L" shaped fore sofas with removable leatherette cushions for outdoors
- Stainless steel handrails and stainless steel wine rack built in the fore sunbed area
- Protective cover for external cushions
- Three electric windscreen wipers
- Teak floor (excluding mooring area)
- Scuppers
- Two speakers

Walk arounds

- Four lockers located in the fore part of the deckhouse under the window
- One side manual pantograph door on port bulwark, to access the galley
- Refueling plugs on both walk arounds
- Fresh water filling plug on each walk around
- Black water discharge on starboard walk around
- GRP side boarding gates in cockpit area
- Teak floor
- Stainless steel handrail
- Teak gunwale
- Walkway lights

Cockpit

- Accessible through two stainless steel aft gates (one on each side)
- Two longitudinal seating areas with backrests and removable cushions
- Protective cover for external cushions
- Fix teak table (in dining area) arranged longitudinally
- Cockpit's bar cabinet, positioned on starboard side, composed of:

- Sink built into cabinet with retractable water tap
- Fridge
- upper storage compartment
- cover top

- Cockpit cabinet, positioned on port side, composed of:
 - compartment for firefighting hose and upper storage compartment
- Saloon access door, in steel with tempered glass, composed of four flat panels three of which sliding to the starboard side.
- Engine room watertight access door, with teak finishing
- Line holding locker on mooring island closed by a corian hatch
- Cockpit floor in teak
- LED lighting
- Two speakers on ceiling
- Scuppers
- Two stainless steel flybridge support poles, Ø 90 mm (3.54 in)
- Gangway extensible system, three positions, maximum capacity 150 kg (330.7 lb) operated through dedicated 24 V DC electro-hydraulic control unit

Platform/garage

- Access from cockpit via two GRP stairways with teak steps
- Two stainless steel boarding gates
- Two stainless steel handrails for climbing into the cockpit
- Pivoting door to access the garage, size:
 - closed: floor 2970 x 1190 mm (9' 8.9" x 3' 10.8")
 - open: floor 2970 x 2410 mm (9' 8.9" x 7' 10.8")
- MAXIMUM INSTALLABLE LIFT LOAD: 640 kg (1410.96 lb)
(the above value considers 400 kg (881.85 lb) of water toys + 240 kg

TECHNICAL SPECIFICATIONS MAGELLANO 25M (FROM HULL 024)

(529.11 lb) for operators and various accessories)

- Manual swimming ladder, telescopic, recessed in the platform, starboard side
- External shower head, on starboard side
- Stern platform floor in teak
- Service compartment on starboard side of the garage with access from foldaway ladder

GARAGE (up to serial no. 016)

- GARAGE WORKING DIMENSIONS: [depth x width x height] 4.40 m x 2.70 m x 1.15 m (14' 5" x 8' 10.2" x 3' 9.2")

GARAGE (up to serial no. 018)

- GARAGE WORKING DIMENSIONS: [depth x width x height] 4.50 m x 2.70 m x 1.15 m (14' 9" x 8' 10.2" x 3' 9.2")

HYPOTHETICAL TENDER (OPT)

- Azimut-Pirelli J39
- SERIAL NO. 018 ONWARDS: Williams 435 Sport Jet Low Profile with deflated tubes, size 4.13 m x 1.76 m x 0.85 m (13' 6.5" x 5' 9.2" x 2' 9.4")

Steering system

Located in elevate position from the saloon, on starboard side, it is accessible through:

- Ladder located forward of the saloon
- Ladder from the flybridge located on starboard side of the flybridge wheelhouse

The wheelhouse includes:

- Helm seat
- Steering wheel

- Internal dashboard consisting of:
 - Raymarine electronic navigation instruments
 - MAN engines control panels built in the Raymarine display
 - Engine throttles
 - Bow thruster controls
 - Trim tab controls (intruder)
 - audible alarm controls
 - magnetic compass
 - Communication systems (VHF)
 - 12 V socket
- Carpeted floor
- Ceilings, mullions, and window carters
- LED technology lighting
- Air conditioning outlets
- Emergency panel



N.B.

Electronic navigation instruments: see relevant paragraph.

Saloon / Dining room

Located amidships it is accessible from the cockpit through a glass door with four panels, three of which sliding to the starboard side
It is composed of:

- One four-seater "L" shaped sofa, placed longitudinally on port side
- Two armchairs on starboard side, in front of the sofa
- One table
- TV Lift with TV set
- Carpeted floor
- Lacquered ceiling
- Ceiling-mounted recessed LED spotlights
- Dining table
- Eight chairs
- Sockets

TECHNICAL SPECIFICATIONS MAGELLANO 25M (FROM HULL 024)

- Air conditioning control panel
- Air conditioning outlet grids built in the internal furnishing
- Roman blinds
- Saloon door curtain in fabric
- Wheelhouse access ladder located at the center of the fore part
- Lower deck access ladder located at the bow on starboard side
- Day toilet access door
- Two hinged doors located forward on port side, for access to the galley

Galley

Full-beam, located forward of the saloon, with two accesses:

- On port side of the saloon fore part, through a door with two hinged panels
- From port walk around through a manual pantograph door

It is composed of:

- Wooden effect laminated floor
- Laminate worktop
- Stainless steel double sink with faucets
- 419 l (14.8 cu.ft) fridge + 247 l (8.7 cu.ft) freezer
- Fridge (130 l (4.6 cu.ft)) under the top
- Four-burner induction range
- Extractor hood
- Oven
- Garbage can
- Storage wall cabinets on starboard bulwark
- Storage column at the center of the boat
- Crew relax area with sofa and table by the port bulwark
- Main electric panel
- Sockets
- LED technology spotlights

- Air conditioning system control panel
- Air conditioning outlet grid built in the internal furnishing
- Crew zone access ladder, fore

Day toilet

Located at the center of the fore area of the saloon, accessible through a sliding door.

It is composed of:

- Washbasin with marble top
- Mixer tap
- Mirror
- Toilet
- LED lighting
- Walnut floor, in planks
- Air extractor
- Socket
- Head accessories

Owner's cabin

Full beam owner's cabin, midship.

It is composed of:

- Central entrance with hinged door
- Walk-in wardrobe with hanger bar, chest of drawers, internal lighting, and full-height mirror
- Vanity with pouf, located on walk-in wardrobe wall
- Double bed located by the aft bulkhead, starboard side, with foldaway bed plane and container locker
- Mattress, pillows and bedspread
- Two bedside tables
- Reading lights: four wall lights
- Two seater sofa by the starboard bulwark
- Wardrobe on starboard side
- Direct access to the head on port side
- Wardrobe on port side forward of the head area

TECHNICAL SPECIFICATIONS MAGELLANO 25M (FROM HULL 024)

- Fix side windows on each side of the cabin with built-in portlights
- Venetian blinds
- LED technology main lighting
- LED technology courtesy lighting
- Lacquered ceiling
- Lacquered and wood upholstered bulwarks
- Carpeted floor
- Sockets
- TV
- Two speakers on ceiling
- Air conditioning system control panel
- Air conditioning outlet grids built in the internal furnishing

Owner's head

Located on port side of the owner's cabin.

It is composed of:

- Double washbasin with open marfil creme marble top on port bulwark
- Washbasin cabinet with three drawers
- Steel mixers
- Mirrors
- Lighting with LED spotlights above washbasins
- Direct lighting with cockpit ceiling-mounted recessed spotlights with LED technology
- Venetian blind
- Wooden flooring
- Sockets
- Toilet and shower enclosure separate by lacquered hinged door:
 - Toilet
 - openable portlight
 - Venetian blind
 - suction grating
 - shower enclosure with glass access door
 - shower enclosure laminate walls
 - removable wooden grating

- thermostatic mixer
- hand-held and ceiling-mounted shower head
- soap holders
- watertight spotlights
- A/C outlet grid
- Air extractor
- Head accessories

Starboard side guest cabin

Located along the central corridor, starboard side

It is composed of:

- Two single beds positioned longitudinally with foldaway bed plane and storage locker
- Two mattresses, two pillows, and two bedspreads
- One wall lighting
- One plane with anti-roll between the beds
- One wardrobe with hanger bars and two drawers
- Panoramic fixed window with built-in portlight
- Venetian blind
- LED technology lighting
- Fabric-upholstered ceiling
- Wooden and fabric upholstery
- Carpeted floor
- Sockets
- Two speakers on ceiling
- Air conditioning system control panel
- Air conditioning outlet grid built in the internal furnishing
- Direct access to the head through internal hinged door

TECHNICAL SPECIFICATIONS MAGELLANO 25M (FROM HULL 024)

Starboard guest head

Located fore of the starboard guest cabin
It is composed of:

- Independent access from starboard guest cabin
- Washbasin with marfil cream marble top
- Faucets
- Washbasin cabinet with storage panels and one drawer
- Bulwark side storage with sliding mirror
- Storage on fore bulkhead
- Toilet
- Shower enclosure with:
 - glass access door
 - wooden grating
 - shower enclosure walls covered with laminate
 - hand-held and ceiling-mounted shower head
 - thermostatic mixer
 - soap holder
 - two watertight spotlights
 - suction grating
- Openable round portlight
- Venetian blind
- LED lighting
- Wooden flooring
- Socket
- Head accessories
- A/C outlet grid
- Air extractor

Port side guest cabin

Located along the central corridor, port side
It is composed of:

- Double bed arranged crosswise
- Mattress, pillows and bedspread
- Reading lights: two wall lights
- Two planes with anti-roll at the sides of the bed

- One wardrobe with hanger bars and two drawers on the fore side of the cabin
- Aft bulkhead with mirror panel above the boiserie
- Fore upholstered bulkhead
- Panoramic fixed window with built-in portlight
- Venetian blind
- LED technology lighting
- Upholstered ceiling
- Wooden upholstery
- Carpeted floor
- Sockets
- Two speakers on ceiling
- Air conditioning system control panel
- Air conditioning outlet grid built in the internal furnishing
- Direct access to the head through internal hinged door

Port guest head

Located fore of the port guest cabin
It is composed of:

- Independent access from port guest cabin
- Washbasin with marfil cream marble top
- Faucets
- Washbasin cabinet with storage panels and one drawer
- Mirror
- Storage cabinet on bulwark side
- Toilet
- Shower enclosure with:
 - glass access door
 - wooden grating
 - shower enclosure walls covered with laminate
 - hand-held and ceiling-mounted shower head
 - thermostatic mixer
 - two watertight spotlights
 - suction grating

TECHNICAL SPECIFICATIONS MAGELLANO 25M (FROM HULL 024)

- Openable round portlight
- Venetian blind
- LED lighting
- Wooden flooring
- Socket
- Head accessories
- A/C outlet grid
- Air extractor

VIP cabin

Located forward, full-beam, accessible through the door on starboard side of the lower deck access ladder

It is composed of:

- Transversal double bed on port side with foldaway bed plane and locker underneath
- Mattress, pillows and bedspread
- Two reading lights
- Two LED wall lights on headboard
- Two storage compartments with power sockets at the head of the bed
- Dressing on starboard side with hinged door, hanger bar, internal lighting, and chest of drawers
- One fixed panoramic window
- One round openable portlight, built in the panoramic window
- Venetian blind
- Lighting with recessed LED spotlights
- Upholstered ceiling
- Wood-upholstered bulwarks
- Aft bulkhead with upper mirror panel
- Fore upholstered bulkhead
- Carpeted floor
- Sockets
- Two speakers on ceiling
- Air conditioning system control panel
- Air conditioning outlet grid built in the internal furnishing

- Direct access to the head through internal hinged door

VIP head

Located on starboard side of the VIP cabin

It is composed of:

- Independent access from VIP cabin
- Washbasin cabinet with marfil creme marble top and riser
- Faucets
- Cupboards above washbasin with mirror doors
- Toilet
- Shower enclosure with:
 - glass access door
 - removable wooden grating
 - shower enclosure walls covered with laminate
 - hand-held and ceiling-mounted shower head
 - thermostatic mixer
 - soap holders
 - two watertight spotlights
 - suction grating
- Openable round portlight
- Venetian blind
- LED lighting
- Wooden flooring
- Socket
- Head accessories
- A/C outlet grid
- Air extractor

Crew room

Crew area

The crew area is accessible through an internal staircase located forward of the galley

It is composed of:

- Shared head on port side

TECHNICAL SPECIFICATIONS MAGELLANO 25M (FROM HULL 024)

- Captain's cabin on port side, equipped with full size single bed
- Crew cabin, starboard side, with two bunk beds
- Shared storage area on starboard side
- Column with washing-drying machine and upper storage
- Storage under the staircase

Both cabins have:

- Carpeted floor
- Wardrobe
- Chest of drawers
- Air conditioning system control panel
- Socket
- LED lighting
- Reading light
- Two speakers on ceiling
- Mattress, pillows and bedspread

Crew head

The crew area is provided with shared head dressing, shower enclosure and separate toilet. The head is composed of:

- One washbasin
- One faucet
- LED lighting
- Socket
- Head accessories
- Toilet and shower enclosure separate by hinged door:
 - Toilet
 - cabinet above the toilet
 - wooden grating
 - shower enclosure curtain sliding on guide
 - shower head with flexible pipe
 - thermostatic mixer
 - shower enclosure walls covered with laminate
 - soap holder
 - LED lighting

- suction grating

Electric system

Main characteristics

- Shore-powered power supply
- DC electric panel: Installed on fore bulkhead of the engine room
- AC electric panel: Installed on fore bulkhead of the engine room
- Auxiliary electric panel: installed in the galley
- Emergency control panel: Installed in the wheelhouse
- Battery cut-out / fire extinguishing control panel: located in the cockpit
- Onboard voltages:
 - 230 V - 50 Hz AC
 - 24 V DC from battery set
 - 12 V DC from battery set and AC/DC voltage reducer

Galvanic current insulation

- Zinc anodes

Generator

- Two KOHLER single phase generators - 15.3 kW / 230 V AC - 50 Hz for EU system
- Soundproofing box
- Remote start up

Shore power sockets

- Two 3P 63 A sockets for EU version (100 A for USA version)
- The AC power sources terminate on the main electric panel in the engine room, provided with a voltmeter and ammeter for the 230 V power supply. The AC power sources are protected by suitably sized fuses, and introduced into the network by means of remote control switches.

Batteries

- Services: twelve 95 Ah - 12 V DC batteries

TECHNICAL SPECIFICATIONS MAGELLANO 25M (FROM HULL 024)

- Engines: six 95 Ah -12 V DC batteries
- Generator: two 95 Ah - 12 V DC batteries
- Service battery charger / service backup: two Mastervolt 80 Ah - 24 V
- Engine start-up battery charger: one Mastervolt 24-30 Ah - 24 V
- Genset start up battery charger: one Mastervolt 12-15 Ah - 12 V

Lights and sockets

- 230 V AC sockets for main utility power supply, EU type
- USB sockets
- Internal lighting: 24 V LED-type (no dimmer)
- External lighting: 24 V LED-type (no dimmer)

Electronic navigation instruments

- Raymarine BRONZE version
- Automatic pilot

For a detailed list of alternative/additional equipment available, please refer to the Optionals price list

► N.B.

The electronics are constantly being updated, therefore the indicated configuration may be subject to changes.

Bilge system

- Main bilge system composed of eight automatic and independent pumps located in each watertight compartment:
 - one in the service compartment
 - three in engine room
 - one in port guest cabin, next to the aft bulkhead
 - one in starboard guest cabin zone next to the stabilizing fin compartment

- one (central) fore between the gray / black water tanks and the fresh water tank
- one (central) forward of the fresh water tank

Each automatic pump has also a manual pump near it.

Fire extinguishing and chain washing system

- System manual activation control in the cockpit
- System indicators/reset on internal and flybridge dashboards and also in the crew room
- One 52-liter (1.83 cu.ft) gas extinguisher in the engine room with nozzles located above the engines
- Closing the valves on fuel delivery lines to engines and generators

Fuel system

- 8100 l (2139.8 US.liq.gal.) GRP structural fuel tank placed centrally and longitudinally forward of the engine room bulkhead; hydraulic connections are carried out all in the engine room
- Two fuel level electronic sensors monitored by means of indicators on internal and flybridge wheelhouse
- One battery-powered electronic fuel level sensor in the engine room
- Two engine double RACOR settling filters
- Two MAN diesel dual filters for engines
- Two RACOR filters for generators
- Four tank vents (two on each bulwark, one at the bow, and one at the stern)
- Remote engine diesel shut-off via 24 V solenoid valve
- Remote generator diesel shut-off via 12 V solenoid valve

TECHNICAL SPECIFICATIONS MAGELLANO 25M (FROM HULL 024)

- Two refueling plugs located on walk arounds (one plug on each side)

Fresh water system

- 1500 l (396 US.liq.gal.) structural GRP tank under fore VIP tray
- Two water filling plugs located on the fore part of walk arounds (one plug on each side)
- Water pressure pump unit located in the engine room with dual power supply (230 V AC - 50/60 Hz and 24 V DC) with electronic control
- Two water heaters, 80 l (21.13 US.liq.gal.) each, symmetrically positioned under the crew cabin
- Fresh water toilet flushing
- One level sensor with electronic indicator in the wheelhouse
- System that can be isolated by ACORN manifolds
- Provision for desalination system
- Two tank vents at the bow
- Three windscreen washing nozzles
- Recirculation pump
- Three hoses located one at the stern, one at the bow and one on the flybridge.

Black water system

- Structural GRP tank, 750 l (198.1 US.liq.gal.) located at the center of the yacht forward of the diesel tank and on port side next to the gray water tank
- One level sensor with level indication in wheelhouse
- Tank emptying through electric pump manually controlled from the internal wheelhouse
- One 50l/min (13.2 US.liq.gal./min) macerator pump
- Suction point on starboard walk around for emptying the tank from shore

- Tank collection of all toilet discharges
- TECMA toilet
- Two anti-odor filters
- Two tank breathers on bulwarks

Gray water system

- Structural GRP tank, 750 l (198.1 US.liq.gal.) located at the center of the yacht forward of the diesel tank and on starboard side next to the black water tank
- One level sensor with automatic/manual pump control and alarm in the wheelhouse
- One 50l/min (13.2 US.liq.gal./min) macerator pump
- Six gray water collection trays for automatic transfer from utilities to main tank
- Two tank breathers on bulwarks
- Suction point on starboard walk around for emptying the tank from shore (up to serial no. 016)
- Two transfer pump in owner's cabin (serial no. 018 onwards)

Seawater system

- Engine cooling system: includes one seawater intake for each engine with filter and 3" ball valve for cooling the following equipment:
 - engine
 - marine gear
 - Through-hull fitting
 - Raiser
- Generator cooling system: includes one seawater intake for each generator, with filter and 1½" ball valve
- Air conditioning condenser cooling system: one seawater intake with filter and 1½" ball valve
- Chain washing / fire extinguishing

TECHNICAL SPECIFICATIONS MAGELLANO 25M (FROM HULL 024)

Ventilation/extraction

- Forced head ventilation: through 24 V DC centralized extractor and motorized shutters for the below deck area
- Day toilet: single dedicated extractor
- Engine room:
 - natural ventilation through two air ducts located on deckhouse side (inner side of walk arounds) and provided with water separator
 - natural ventilation of the service compartment
 - natural ventilation of the garage
 - four extractors located abaft the engine room, with extraction duct that conveys the air outside through an opening on hull bulwark

Other systems

- Interceptors system composed of:
 - two interceptors, 900 mm (2' 11.4")
 - two servo units
 - one electronic control unit
 - two control panels (one on each wheelhouse)
- Electro-hydraulic steering system composed of:
 - two rudder tillers with casings
 - two hydraulic cylinders
 - two electro-hydraulic control units
- Gangway system: extending, 3 positions, maximum capacity 150 Kg (330.7 lb), operated through 24 V DC electro-hydraulic control unit
- Aft pivoting hatch, max capacity 1000 kg (2204.6 lb)

Air conditioning system

- Air conditioning type: The system is of the thermally treated water circulation type, with fancoils

- Compressor unit in engine room, 144000 total BTU with inverter technology
- One seawater pump
- Distribution:
 - Wheelhouse: twp AP8 Slim fancoils (2 x 12,500 BTU/h)
 - Galley: two AP8 fancoils (2 x 12,500 BTU/h)
 - Saloon / Dining: five AP8 fancoils (5 x 12,500 BTU/h)
 - Owner's cabin: two AP5 fancoils (2 x 9,200 BTU/h)
 - VIP cabin: one AP5 fancoil (1 x 9,200 BTU/h)
 - Port guest cabin: one AP5 fancoil (1 x 9,200 BTU/h)
 - Starboard guest cabin: one AP5 fancoil (1 x 9,200 BTU/h)
 - Commander's cabin: one AP3 fancoil (1 x 6,200 BTU/h)
 - Crew cabin: one AP3 fancoil (1 x 6,200 BTU/h)
- Each area has its own control panel making it independent

Equipment

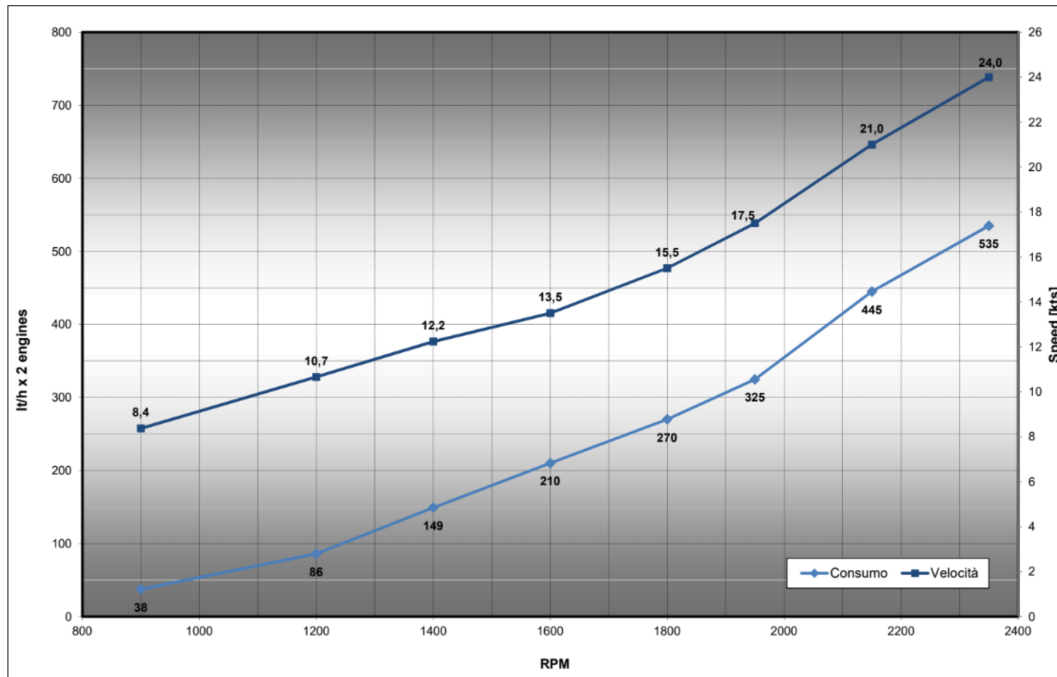
- Two telescopic boat hooks
- Six mooring lines
- Fender lines: 24 m (78' 9")
- Two anchor chain stoppers
- Eight fenders
- Eight fender covers
- One Owner's manual
- One set of stainless steel cutlery
- One set of porcelain plates
- One set of glasses
- Four floating key rings
- Two bags with logo for storing the manuals
- One remote control holder with logo
- One stainless steel scheduled maintenance kit

TECHNICAL SPECIFICATIONS MAGELLANO 25M (FROM HULL 024)

- One cover for flybridge cushions, flybridge instruments, and cockpit

TECHNICAL SPECIFICATIONS MAGELLANO 25M
(FROM HULL 024)

Annex 2 - Performance / consumption chart



TECHNICAL SPECIFICATIONS MAGELLANO 25M (FROM HULL 024)

NB

The contents of this document are for informational purposes only and do not constitute an opinion or guarantee regarding the characteristics of the pleasure craft described herein.

Azimut|Benetti S.p.A. therefore does not guarantee the accuracy, completeness or updating of the information and specifications contained in this document and, in particular, declares that certain details and technical specifications described herein may differ for the models available.

Therefore, Azimut|Benetti S.p.A. does not make any guarantee regarding the use of the content, details, specifications or information contained in this document in terms of correctness, accuracy, adequacy, utility, timeliness, reliability, in any case, within the limits established by law.

