



OCEAN ALEXANDER®

UPGRADE/OPTIONS LIST

Ocean Alexander 35P Tri-Level Motor Yacht Hull No. 35P02 (Model Year 2025)

NO.	DESCRIPTION
	One unit of Ocean Alexander 35P Tri-Level Motor Yacht with standard equipment
A.	EXTERIOR/INTERIOR DÉCOR OPTIONS
1	Full height electric glass sliding door in salon aft/ starboard and skylounge aft
2	Electric shades with remote control for all staterooms and public space windows include electric doors.
3	3x electric helm seats in lieu of single manual helm seat.
4	In-glass portlight for VIP (2x) and guest staterooms (2x)
5	TOTO® toilets - (2x for Master)
6	Port and starboard staterooms side-by-side berths can slide together
7	Heated stone floors in Master bathroom
B.	MAJOR MECHANICAL/ELECTRICAL EQUIPMENT
1	Stabilizers & Thrusters Package
2	Mechanical/ Electrical Convenience Package
3	Headhunter sewage treatment system (600Gal/day)
4	Add plug-in engine wired remote at aft deck and bridge deck+ 2x wing stations
5	Entertainment system
6	Extended Cruise Package
7	Global Cruise Package
8	Spare Parts Package
9	Water maker and purification Package

C.	EXTERIOR OPTIONS
1	Teak Decking Package
2	Transom Upgrade Package
3	Transformer Z-lift hydraulic swim platform
4	Aft-deck transom structural reinforcement per Froude Friction Evaluation for towing tender based on towing force for an approximate 45ft Length (13ft beam), 25,000lbs displacement boat, with capstans (tender not included).
5	6-Person lighted Jacuzzi on bow deck with custom sunpad. Includes dedicated 18KW tankless water heater.
6	Exterior Awning/Protection Package
7	Exterior Convenience package

35P02 MOTOR YACHT

Available Now: 3Q2024
2025 Model Year



OCEAN ALEXANDER®

www.oceanalexander.com

35P MOTOR YACHT

PARTICULARS:

Length overall	34.6 m.	113' 6"
Length with Swim Platform Extended Out	36.6 m.	120' 0"
Waterline length	29.5 m.	9'6 9-1/2"
Beam overall	7.44 m	24' 5"
Tonnage	273 GT	
Draft	2.31 m.	7' 7"
Height above waterline (half load, antennas excluded)	13.75 m.	45' 1-3/8"
Full load displacement	175,000 kg.	385,809 lbs.
Half load displacement	167,026 kg.	368,229 lbs.
Fuel capacity	19,040 L.	5,030 gal.
Fresh water capacity	2,500 L.	660 gal.
Black water capacity	1,890 L.	500 gal.
Speed and range	Refer to performance data	
Generator	Twin Kohler® 55 KW	
Power	Twin MAN® 2000 HP	
Exterior paint	Off white Alexseal® Polyurethane	
Interior décor scheme	Serenio	

Specifications and equipment are subject to change without notification and dimensions are best approximate.

General arrangement may show optional equipment.

CONSTRUCTION:

General:

- The yacht is constructed in high-density closed-cell structural foam. High density foam allows for high temperature advantages in thermal and acoustic insulation.
- Longitudinal and lateral fiberglass foam-core stringers.
- Fiberglass with vinyl ester/ epoxy infusion lamination manufacturing technology, increases strength by 20% and reduces weight by 18% compared to hand-layup.
- Reinforced collision bulkhead.
- Cross-knit carbon fiber in high stress areas to increase structural integrity and torsional strength.
- Water-tight bulkheads with sound proofing for engine room.
- Ocean Alexander employs various techniques to reduce sound and vibration. Some of these techniques include multiple insulation barriers including reflective materials, absorptive materials, dampening materials, air pockets and flexible isolation mounts for controlling sound and noise transmission.
- Painted exterior surface with professional grade Alexseal® polyurethane paint and epoxy based primers. Highest gloss and color retention compared with gelcoat or other paint brands. Guarantee color match by Alexseal®.
- All exterior hardware to be 316 stainless steel or per manufacturer requirements.
- Aluminum components meet marine grade 5052 or 6061 specification.
- Engine foundation: Main engine stringer will be constructed from stainless steel plates custom formed to encapsulate over engine structural stringers. Allows for industry leading support and isolation.
- Frameless windows.
- Tempered glass venturi to increase resistance to cracking and hazing due to UV.
- OA uses CPVC instead of PVC in both potable water system and chiller A/C system. CPVC can handle temperature up to 200°F (93°C), while PVC peaks at 140° (60°C). Reducing risk of joints and pipes failing, and therefore, failure of the plumbing system. CPVC piping is also extremely resistant to corrosive chemicals. CPVC can handle salts, caustics, and acids better than metal and other thermoplastics. There is no pH limitation either, which means that it can hold up to large pH swings with no damage.
- Sound insulation above bilge mechanical areas with rubber for motors.
- Lightning protection system. Lightning arrestor pole installed on mast with dedicated ground cable to grounding plate attached to underwater hull surface. Minimizes potential lightning strike damage to yacht electrical and critical systems.
- Aft-deck transom structural reinforcement per Froude Friction Evaluation for towing tender based on towing force for an approximate 45ft (13.7m) Length/ 13ft (3.66m) beam, 25,000lbs (11,340kg) displacement boat, with capstans (tender not included).

Hull / Bottom:

- Interior structural components all bonded to hull.
- Three coats of "self-polishing" antifouling bottom paint shall be applied on three coats of anti-blister epoxy barrier coats.
- Rub rail with 316 Stainless-steel striking plate.
- Bronze through-hull fittings.

MECHANICAL:

Main Engines:

- MAN® V12 2000 HP engine “MAN Gold Standard” includes: 60-month warranty on main components: crankcase, crankshaft, connection rods, flywheel.
- Stainless steel engine beds and stainless-steel removable rails on side of engines.
- Automated Gianneschi® intake/exhaust fans with variable frequency drives shall be mounted to facilitate the intake and/ or exhaust of air through the machinery spaces and providing a high air exchange rate. Air intake & exhaust ducts shall have fire dampers installed with manual and automatic triggering that be tied into the machinery shut down circuits.
- Gianneschi® moisture eliminators be installed at front of intake and exhaust ducts.
- Gianneschi® fans for engine exhaust located on superstructure VS hull side. Maximizes water protection and reduced salt spray intrusion into engine space, extending life of engine room components. (Unique OA feature)
- Hard coating with Al6XN alloys on exhaust, provides higher corrosion resistance, especially in the forms of pitting, crevice, and stress cracking.
- Engine raw water-cooling using cupronickel 90/ 10 which offers superior corrosion resistance and inherent bio-antifouling.
- Add plug-in engine wired remote at aft deck and Flybridge.

Shafting/ Propellers/ Steering:

- Ocean Alexander design in oversized shafts, rudder and other drive train systems typically one-class larger than the competition. This results in superior handling and longevity in the Ocean Alexander drive-train system.
- High performance computer designed and machined Nibral propellers.
- Twin Disc® hydraulic steering system.
- Stainless steel rudders w/ integrated zinc plates.
- Ocean Alexander 5 blade propellers to provide better holding power and handling.
- 22HS or similar high-grade austenitic alloy stainless steel propeller shaft that provides superior corrosion resistance along with excellent toughness and high strength.
- Utilization of laser-assisted calibration instrument to ensure alignment of the drive shaft.

Windlass/ Mooring:

- Dual (2) hydraulic vertical anchor windlasses w/ remote foot switches.
- Dual (2) 214 lbs. (97kg) very-high-holding power anchors. The anchor's chain consists of 541' (165m) on each side, made of 12.5mm, attached to the anchors with stainless-steel high-tensile swivels.
- Anchor chain wash system for freshwater cleaning of chain during anchor operation.
- Two 1700W, 24VDC motor capstans on aft deck, with control switches.
- 316 stainless-steel pop-up cleat for tender mooring.

Air Conditioning:

- Dometic® chilled water system air conditioning system, rated for “Extreme Tropical Climates” (with reverse cycle heat for operation down to 50°F (10°C) water temp).
- Refrigerant type is accepted worldwide under the Montreal Protocols.
- Dedicated engine room air conditioning.
- Ocean Alexander Clean Air System incorporates in-duct Nano-mesh UV sterilization technology in MSR and Salon remove up to 99.9% of bacteria, fungi, mold, virus, fumes, and reduce odors. System has no moving parts, is completely silent and ozone free. Ensures fresher, cleaner, and healthier air onboard.

Other Notable Features:

- Heavy-duty commercial grade pantograph windshield wiper & washer w/ intermittent function.
- Buell™ heavy-duty 3-trumpet horn.
- Fireboy® (or equivalent) engine room fire extinguisher system with engine-shutdown feature.
- Ocean Alexander proprietary "dry bilge ventilation system" with dedicated bilge exhaust to outside vents. This provides constant airflow to keep the bilge dry and mildew free.

Stabilizers & Thrusters Package

- Sidepower® Vector Fin 18 sq. ft. (1.7 sq.m) hydraulic stabilizer fins with zero speed stabilization function.
- Sidepower® patented "curved" fin design not only provides lift underway it is also unique in the industry with active "predictive" inertia control.
- Up to 50% more efficient than flat fins at anchor.
- Up to 30% more efficient than flat fins underway.
- 58.2HP each for bow and 42.6HP for stern thrusters.

Spare Parts Package

- Includes Spare: Bilge pump, LED light, Engine/Generator filter, Wiper blades, Touch up paint, Fuses, Engine manuf. Spare parts kit, Generator manuf. spare parts kit, Float switch, Vimar outlet, GFI outlet, Vimar switch, Wood veneer.

Mechanical/ Electrical Convenience Package

- Lube oil change system for engines and generators with approximately 120-gallon lube tank.
- Gulfcoast™ Fuel polishing system.
- Compressed air in engine room, aft deck and boat deck.
- Potholder
- Searchlight and spreader lights for swimstep and bridge deck.
- 3x 32" touch screens on helm (upgrade from 3x 24").
- Onboard intranet, driven by commercial-grade 4G SIM card capable Wi-Fi router. Allows outside 4G Internet antenna and/or internal intranet net connection via supplied iPad to Systems monitoring, and other onboard video/audio apps.
- Dimmer for interior and exterior main ceiling lights.
- Salon, MSR, VIP, Skylounge with KNX programmable lighting.
- Sea water and compressed air supplying with 110V outlet at boat deck for inflatable slide or other water toys.

PLUMBING:

Fresh Water System:

- 316 stainless-steel water tank with sight gauge.
- Headhunter™ fresh-water pump (x2).
- Fresh-water wash down at bow, stern and upper deck.
- Dockside water connection.
- One (1) 100-gallon (190 liter) hot water heater with high density insulation and dual high efficiency heating elements that speed heating by 50%.

Water maker and purification Package

Dometic® 1,800G/Day water maker w/ auto fresh water flush operation and integrated Spot-Zero XZ premium filtration system for drinking, bathing and cleaning.
4-stage ""Best in Class"" fresh water filtration/sterilization.

- Stage 1: City water is initially filtered for heavy metals/large particles and sediment.
- Stage 2: Watermaker and City water is filtered for biofilms and with Nano Silver dosing, biocidal properties are maintained even in water tank.
- Stage 3: From water tank filtered through active carbon (smells and odors) and bacteria filter.
- Stage 4: UV water sterilizer is used as a final line of defense against microbiological bacteria/virus.

Fuel System:

- Marine grade aluminum fuel tanks with sight gauges and high/ low level alarms, welded and hydro-tested to ISO standard.
- Stainless-steel fuel piping system
- Fuel transfer pump

Extended Cruise Package

- Install on yacht as back-up, 2nd freshwater pump, A/C sea water pump, A/C circulation pump, hot water pump, overboard discharge pump, and macerator transfer pump.
- Fridge in lower foyer
- 2nd treatment system
- 2nd water maker

Notable features:

- Headhunter sewage treatment system. (600Gal/day)/(2,271L/day)

ELECTRICAL:

AC/DC System:

- **Octoplex NEMA 2000 electrical safety/security control system.** Based on aerospace technology for remote activation, control and status reporting of all AC and DC breakers. Monitors all power sources (AC and DC) for voltage, frequency and amperage abnormalities and provide visual and audio alerts. Includes enhanced circuit breaker functionality with no-load indication & Brown-out. Provides sensors for main doors, tank level, bilge, and battery monitoring of current, voltage and temperature.
- This security/safety automatic monitoring and alert capabilities include using Apple iPad or Android for remote access to operate, view, and arm Octoplex® data and navigation system with remote notification accessibility.
- Shore power connections: Two CM-8 100Amps cable master with 120' (36.6m) cables with Iso-boost which manages voltage drops due to shore power by boosting output voltage, thus keeping electric system stable.

Global Cruise Package

- Pure sine shore power converter with voltage auto-ranging that allows for automatic marina power conversion irrespective of single or three-phase and 50Hz or 60Hz, provide clean, stable and reliable power for the yacht.
- Reserved configuration and swappable wall plugs convert between 110V/60Hz and 220-240V/50Hz residence power.
- True global yachting and global resale capability.

Navigation Package:

- Garmin 8700 Series Black Box with (3) 32" touch screens
- Garmin GRID remote input device installed on helm chair
- Garmin 25KW Open Array Radar

- Garmin Autopilot GHC20
- Garmin VHF and Card Reader
- Garmin Blackbox sounder
- Garmin AIS with NMEA GPS
- Garmin Marine Camera (2 in engine room and 1 aft deck)
- KVH® TracVision® UHD7 satellite TV antenna
- Ritchie® Compass 4"
- iPad with built-in Garmin App for navigational control/ viewing via iPad

Entertainment System:

Includes the following equipment installed at factory:

- Apple TV multi-zone distribution experience system.
- Salon: electric flip down LED 55" TV with A/V System, subwoofer, Satellite Receiver
- MSR: electric flip down LED 55" TV with A/V System, Satellite Receiver
- Skylounge: LED 65" TV with A/V System, subwoofer, Satellite Receiver
- VIP stateroom: wall mount LED 50" TV with Satellite Receiver
- Guest stateroom: wall mount LED 32" TV with Satellite Receiver
- Aft Boat deck: electric flip down LED 50" TV with speakers, Satellite Receiver
- Aft deck: electric flip down LED 50" TV with speakers, Satellite Receiver
- Fly bridge: wall mount LED 55" TV with Satellite Receiver
- Beach Club: electric flip down LED 50" TV with Satellite Receiver
- Pre-wire for future installation of custom

ACCOMODATIONS/ INTERIOR& EXTERIOR DETAILS:

Interior/ Exterior Décor:

- Windows with dramatic architectural details allowing for 28% greater visibility and incoming natural light.
- Hardtop with dedicated custom removable 316 stainless-steel ladder to top side of hardtop.
- Elliptical 316 stainless-steel handrails & stanchions.
- 316 stainless-steel cleats.
- Two stainless-steel flagpoles, one each at bow and stern.
- Weather-tight door on side deck for access to crew area.
- Side boarding gates in cockpit.
- Sun pads at bow and fly bridge.
- Stone-topped wet bar with sink, refrigerator, and icemaker on aft main deck, aft bridge deck.
- Built-in fiberglass seating with table, refrigerator, icemaker on fly bridge.
- Elka® carbon fiber shower rod with flush connection at swim step.
- 3 in 1 shower set include hand held shower, head shower and rain shower in all 5x staterooms.
- Polished S/S frame at both side wall in 5x staterooms, salon and skylounge.
- 10x person dining table with chairs on boat deck.
- Dedicated stainless-steel work bench with vice, Snap-on tool chest, and storage in electrical room.
- Electric Shades with remote control for all staterooms and public space windows include electric doors.
- Teak decking package
- "Flip-Up" Transom - in lieu of sliding door.
- Transformer Z-lift hydraulic swim platform
- 6-Person lighted Jacuzzi on Bow Deck with custom sunpad. Includes dedicated 18KW tankless water heater.

Salon:

- Custom-designed furniture and sofa.
- Custom-designed window mullion with ceiling treatment.
- Wood paneling and cabinetry.
- Sub-Zero® drawer refrigerator/ freezer/ice maker under wet bar counter with stone top.
- Full height electric glass sliding door in Salon aft and Stbd. side.

Dining Room:

- Adjustable shelf tracks and dividers be installed for china, glass and silver storage.
- Cabinets with stone door panels.
- Ten-person stone top dining table secured w/ chairs.
- Coffered ceiling feature with spot light above dining table.
- Day head with stone sink, cabinet and painted wall panel.
- Stone floor with S/S insert.

Galley:

- Galley storage cabinetry w/ hidden hinges.
- Stone countertops& floor.
- Franke® stainless steel kitchen sink.
- Wolf®, wall mount range hood.
- Wolf® 36" induction cook top.
- Wolf® 30" electric oven.
- Sub-Zero® 36" built-in refrigerator.
- Sub-Zero® 36" built-in freezer.
- Sub-Zero® 24" built-in wine cooler.
- Sub-Zero® built-in ice maker.
- Whirlpool® trash compactor.
- Wolf® microwave.
- Miele® dishwasher.
- Whirlpool® garbage disposal.
- Walk-in storage in Galley.

Lobby:

- Double height floating S/S stairs with stone steps.
- Full height storage cabinet.

Skylounge:

- Day head with stone sink, cabinet and painted wall panel.
- Sub-Zero® drawer refrigerator/ freezer/ice maker under wet bar counter.
- Full height electric glass sliding door in Sky lounge aft.

Pilothouse:

- Ship's alarm panel for bilge and tank monitoring.
- Red light for nighttime running.
- Forward windows with three windshield wipers with freshwater nozzles.
- Port and starboard doors to exterior bridge deck, flush in house side.
- Radio desks.
- Storage locker.
- Three electric helm seats.
- Full height glass sliding door with switchable privacy glass.
- Wide viewing curved front window without mullion.

- 2x flip up wing control stations at both side bridge deck.

Master Stateroom:

- King-sized berth (with independently coiled his & her sections to ensure minimal transfer of movement)
- Two nightstands with leather countertops.
- Full glass vanity table.
- Cushioned settee.
- Walk-in closet.
- Hidden safe for valuables.
- Custom large shower, fitted with tempered glass enclosure with securing device, door will be stainless steel hinge.
- 2x arm chairs with coffee table.
- Chaise lounge.
- TOTO® toilet (2x for Master). Tornado Flush technology with auto flush, lid closing, heated seat adjustable spray and 3-mode washlet air purifying system with remote control.
- Heated stone floors in Master bathroom.

VIP & Guest Staterooms:

- Queen-size berth with innerspring mattress and storage beneath.
- Port and or starboard staterooms side-by-side berths can slide together and convert to single berth. Includes additional nightstand that the berth slides over and conceals/ reveals depending on berth arrangement.
- Headboard finished in upholstered fabric per interior designer's spec.
- Nightstands with drawers and tray.
- Dressing mirror.
- Leather top vanity/dressing table.
- Hanging locker with lighting.
- Privacy locksets.
- In-glass portlight.
- Vanity with vessel sink having cabinet below and mirror above.
- Head flooring selected stone.
- Shower and floor surround to be faced in stone per selected option, fitted with tempered glass enclosure with securing device.
- Ceiling S/S insert align with wall

Lower Foyer:

- Sub-Zero® Drawer refrigerator/freezer/ ice maker under counter.
- Stairwell to main deck with stainless steel handrails.

Beach Club:

- Settee, 2x lounge chairs and coffee table.
- Flip down TV with speakers.
- Full teak floor.
- Teak and holly veneer wall / ceiling in bar area.
- Cabinet including wet bar, refrigerator, and ice maker.
- Dedicated air conditioning.

Heads:

- Custom-made seamless fiberglass stall shower w/ one-piece glass door. Reduce mildew by providing a clean, easily disinfecting wipe-down surface.

- Air extraction in each head by low noise extraction fans.
- Tecma™ Marine toilet system throughout.
- Stone countertops and back splash in heads with bone china sink.

Crew Quarters:

- Kitchenette (sink, microwave and refrigerator).
- Storage locker in each crew stateroom.
- Settee with table and storage beneath seating.
- Three crew staterooms: captain and two high-low bunk staterooms.
- Captain quarters includes desk and N2KView linked Apple iPad for systems diagnostics/ alerts/ settings.
- 2x Commercial-grade washer & dryer.
- Portholes in crew mess and all cabins.
- Private heads and showers.
- Safe in captain's cabin.

Exterior Awning/ Protection Package:

- Sun awning for Boat Deck, Swim Step and bow with custom-made stainless-steel poles and marine-grade exterior Ferrari mesh fabric. Includes custom designed built-in storage for poles.
- Custom exterior protection canvas covers for exterior cabinetry and windshield mesh cover.
- 316 Stainless-steel transom gates for pet/child protection.

Exterior Convenience Package:

- Custom-designed exterior loose furniture package with hi-low electric coffee table at aft deck.
- Boarding ladder with teak.
- Exterior bridge deck stainless steel stools.
- High output LED underwater lights covering stern 3x and stern sides 2x each designed to wrap around transom with light.
- 32" Electric Chef™ electric barbecue at bridge deck.

Turn Key Package:

- Safety first aid kit.
- Fenders, lines, flare kit, throw ring, fire extinguishers, bell.
- Wheel Puller for ship propellers.
- 2x 8 man life raft.
- Bed linens for Master (King 2x), VIP (Queen 4x) Guest (Single 8x) with pillows cases.
- Bath robe and bath towel set (bath towel/hand towel/wash cloth) - 2 sets per stateroom.
- Dinner china including dinner/salad/dessert plates, soup bowls, teacup and saucers, casserole dish, salt & pepper shakers.
- Flatware including steak knife, dinner knife, fork, spoon and dessert/teaspoon, salad forks, serving spoons & fork.
- Table placemats, napkins, water/white/red/champagne wine glasses.
- Galley cookware/pans.

VESSEL SUPPORT (Unique OA Standard feature):

- Orientation: Prior to delivery. Owner and captain is provided with dockside orientation on the operation of vessel systems by Ocean Alexander personnel.
- Customer Support: OA customer support is on-call 24/7 to owner and crew.

- Vessel is provided with a complete owner's plan package including:
 - Docking Plan
 - Electrical schematic
 - Equipment information packages (user manual, warrant card, etc.)
 - Plumbing Plan
 - Outboard Profile
 - Fuel oil system diagram
 - Freshwater and drain diagram
 - Waste water system diagram
 - Air-conditioning arrangement
 - Owner's Manual
 - Documentation for Application of Tonnage Certificate
 - Software & Wi-Fi set up info
 - Escape Route



ALEXANDER MARINE CO., LTD LIMITED WARRANTY

Alexander Marine Co., Ltd., (hereafter: "AMC") warrants to the original retail purchaser (meaning: the first purchaser/user of the vessel from time of delivery of the vessel in its new condition from AMC's factory) of an Ocean Alexander yacht that it will repair or remove and replace, or cause such to be done, at a place and in a manner in its sole discretion, any part which was both made and installed by it in the new vessel which is determined to be defective and which has been brought to its attention in writing within ONE YEAR of the first retail purchaser taking possession of the vessel. In cases of osmosis, structural issues, integral portion of the hull, deck, stringers, grid system and superstructure which is determined to be structurally defective, AMC must be notified within thirty days of discovery of such condition in order to allow for its repair and arresting of progress of the condition. Failure to so notify AMC shall automatically invalidate and extinguish this warranty as to such condition. Use of the vessel for commercial, business, or rental/charter purposes, misuse of the vessel and/or its components and systems, external damage from foreign objects, or use of the vessel in hazardous circumstances or extreme conditions (whether weather, water or failure to maintain and/or service as required by the manufacturer of the vessel or its components or systems) shall automatically invalidate and extinguish all warranties, whether express, implied or by operation of law. Alterations to the exterior finish, including but not limited to painted surfaces if altered, abused, damaged by foreign objects or chemicals or work by others on it, subjected to abnormal use or conditions (including but not limited to the aforementioned prohibition against commercial and business, rental or charter use), or has not been properly waxed and polished and maintained by the purchaser, or having being re-painted, addition of color stripes; shall also automatically invalidate and extinguish all warranties, whether express, implied or by operation of law.

WARRANTY EXCEPTIONS: What This Limited Warranty **DOES NOT COVER:**

1. Any boat that has been altered or modified from manufacturer factory specifications.
2. Any boat that has been salvaged or declared a total loss or a construction loss for any reason not covered by this Limited Warranty.
3. Engines, transmissions, windshield breakage, controls, propellers, batteries, appliances, other equipment, accessories, or components not manufactured by manufacturer, or which carry their own individual warranties.
4. Gelcoats, paints, varnishes, or other finishes (including cracking, crazing or discoloration), fabrics, canvas, anti-fouling bottom paint, stainless steel, or any plated surfaces except as noted above.
5. Damage caused by misuse, electrolysis, galvanic corrosion, lack of proper maintenance, or improper trailering or any deterioration of underwater equipment.
6. Damage, tearing, fading, shrinkage or deterioration of carpet, upholstery, exterior canvas tops, enclosures or other soft goods.
7. Any Damage caused by accident, fire, or resulting from modifications, racing, abuse, commercial use, or negligence of boat owner, and loading the boat in excess of maximum limits on the capacity.
8. Damage from failure to perform routine periodic maintenance to the boat according to Manufacturer recommendations and any adjustments, realignment or replacement of normal wear items.
9. Incidental damages, including without limitation, transportation, haul out, loading, other expenses incurred in returning the boat for warranty service, loss of use, loss of time, inconvenience, mechanic's expenses or other incidental charges, such as lodging, phone calls, towing, rentals, fuel expense, or food.
10. Any representation or implication of speed, range, fuel consumption or estimated performance characteristics.
11. Any failure or defect arising from a repair made by a non-authorized provider, unless pre-approved by Manufacturer.
12. Any failure or defect caused by an act of nature resulting in damage, cost, or expense.
13. Any item exceeding the expressed coverage limits specified in this this Limited Warranty.
14. Manufacturer reserves the right to change or improve the design or manufacture of boats without any obligation to modify previous boats.
15. Any damage and/or scratches on glass, acrylic, plexiglass and/or any aforementioned surfaces due to improper cleaning and maintenance.

This warranty is in lieu of any other warranty implied or expressed. Manufacturer accepts no responsibility for any representations, acts, or omissions of its dealer relating to the preparation and/or sale of manufacturer boat products to original consumer. This warranty is transferable, and to do so the original owner or purchaser must register new ownership with Manufacturer Warranty Department.

ALL COSTS TO TRANSPORT THE BOAT FOR REPAIRS ARE THE RESPONSIBILITY OF THE OWNER.

SOLE REMEDY: THE REMEDY OF REPAIR OR REPLACEMENT OF PARTS OR MATERIALS THAT ARE FOUND TO BE DEFECTIVE IN FACTORY MATERIALS OR WORKMANSHIP COVERED BY THIS LIMITED WARRANTY SHALL CONSTITUTE THE OWNER'S SOLE AND EXCLUSIVE REMEDY AGAINST MANUFACTURER FOR ANY CLAIMS WHATSOEVER OF ECONOMIC

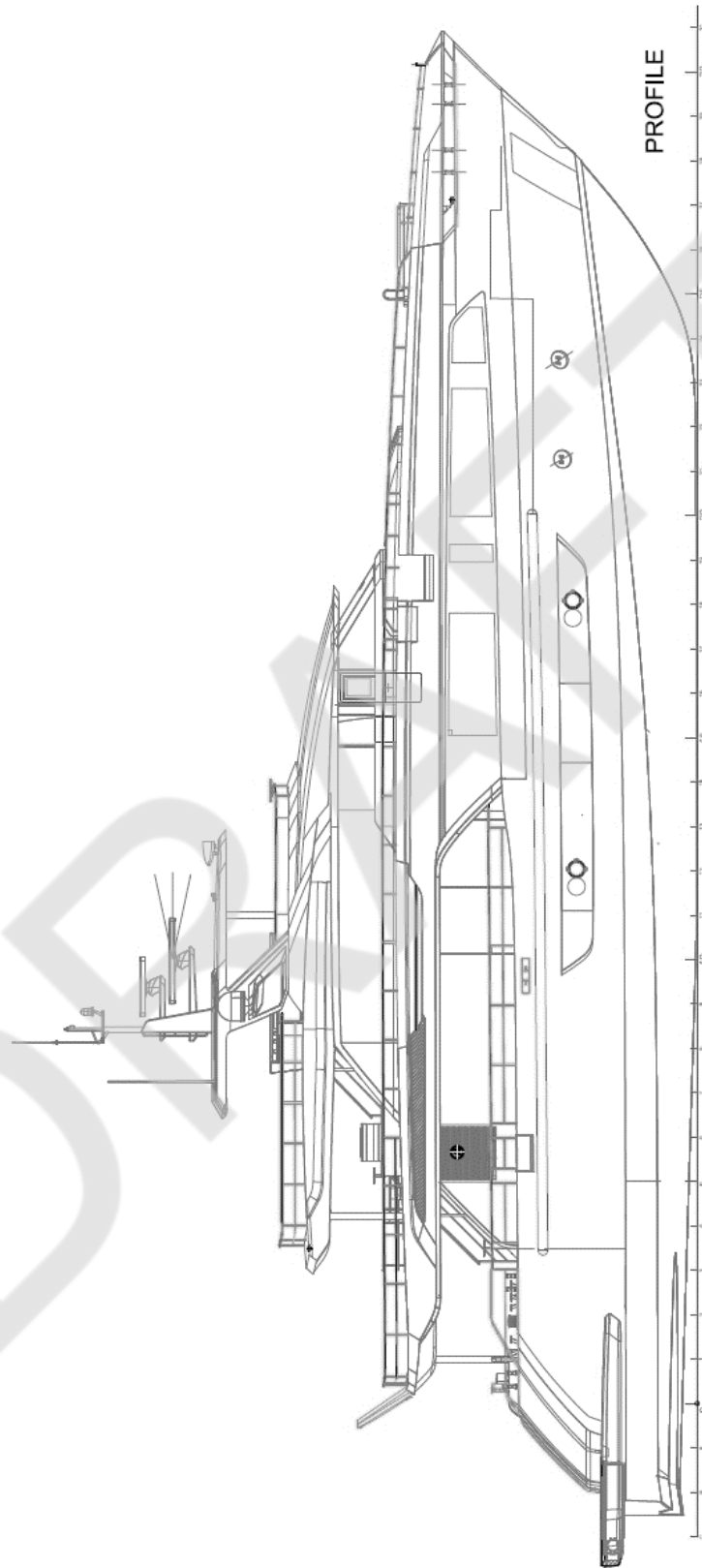
LOSS RESULTING FROM PRODUCT FAILURE. In keeping with environmental policies and practices, Manufacturer reserves the right to utilize reconditioned, refurbished, repaired or remanufactured products or parts in the warranty repair or replacement process. Such products and parts will be comparable in function and performance to an original product or part and warranted for the remainder of the original warranty period. In no event shall any repair or replacement under this Limited Warranty exceed the fair market value of the product as of the date of the owner's claim. Acceptance of any product returned, or any refund provided by Manufacturer shall not be deemed an admission that the product is defective.

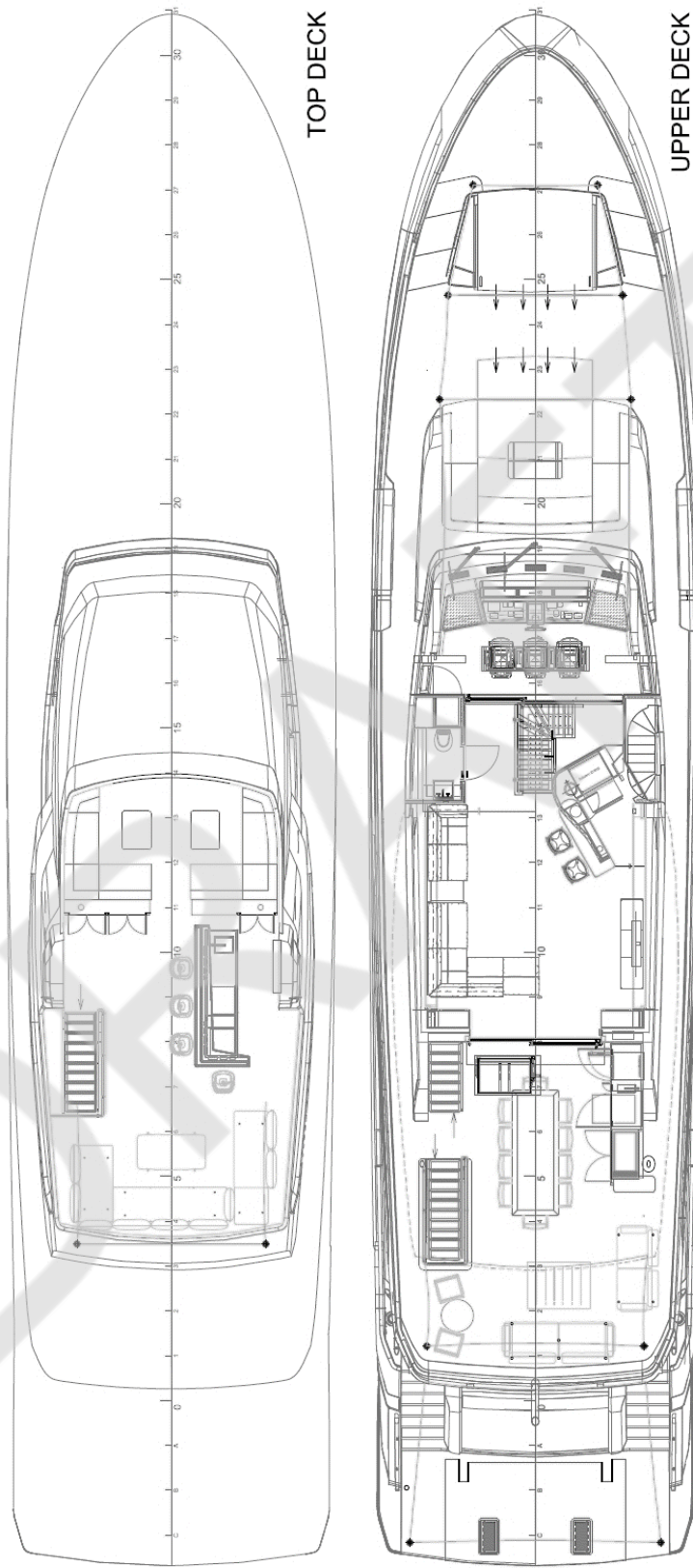
OTHER LIMITATIONS: EXCEPT AS SET FORTH HEREIN, THERE ARE NO OTHER WARRANTIES EITHER EXPRESS OR IMPLIED PROVIDED BY MANUFACTURER ON THIS BOAT. ALL OTHER WARRANTIES, EXPRESS OR IMPLIED, INCLUDING IMPLIED WARRANTIES OF FITNESS AND MERCHANTABILITY, ARE EXPRESSLY EXCLUDED. MANUFACTURER FURTHER DISCLAIMS ANY LIABILITY FOR ECONOMIC LOSS ARISING FROM CLAIMS OF PRODUCT FAILURE, NEGLIGENCE, DEFECTIVE DESIGN, MANUFACTURING DEFECT, FAILURE TO WARN AND/OR INSTRUCT, LACK OF SEAWORTHINESS, AND ANY OTHER THEORY OF LIABILITY NOT EXPRESSLY COVERED UNDER THE TERMS OF THIS LIMITED WARRANTY.

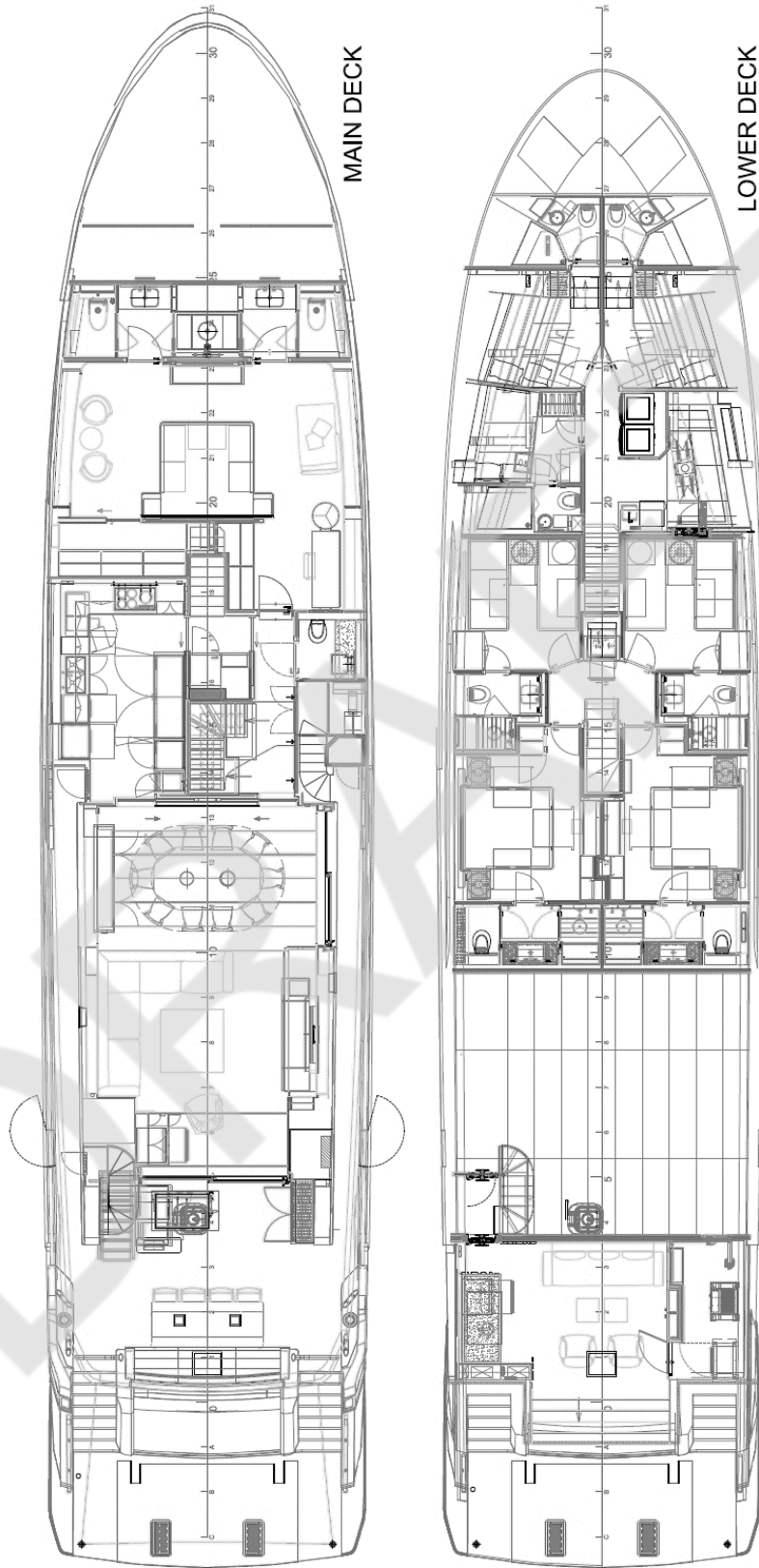
ANY IMPLIED WARRANTY OF MERCHANTABILITY OR FITNESS FOR A PARTICULAR PURPOSE IS DISCLAIMED. TO THE EXTENT THE IMPLIED WARRANTY CANNOT BE DISCLAIMED, IT IS LIMITED TO THE SHORTER OF ONE YEAR FROM THE DATE OF DELIVERY TO THE FIRST RETAIL OWNER OR THE DURATION OF THE RESPECTIVE EXPRESS LIMITED WARRANTIES STATED HEREIN. TO THE EXTENT ALLOWED BY LAW, NEITHER MANUFACTURER, NOR THE SELLING DEALER, SHALL HAVE ANY RESPONSIBILITY FOR LOSS OF THE BOAT, LOSS OF TIME, INCONVENIENCE, COMMERCIAL LOSS OR CONSEQUENTIAL DAMAGES. SOME STATES DO NOT ALLOW LIMITATIONS ON HOW LONG AN IMPLIED WARRANTY LASTS, SO THE ABOVE LIMITATION MAY NOT BE APPLICABLE. SOME STATES DO NOT ALLOW THE EXCLUSION OR LIMITATION OF INCIDENTAL OR CONSEQUENTIAL DAMAGES, SO THE ABOVE LIMITATIONS OR EXCLUSIONS MAY NOT BE APPLICABLE. THIS WARRANTY GIVES THE OWNER SPECIFIC LEGAL RIGHTS, AND THE OWNER MAY ALSO HAVE OTHER RIGHTS WHICH VARY FROM STATE TO STATE OR COUNTRY TO COUNTRY.

OWNER'S OBLIGATIONS: To initiate a warranty claim, it is the responsibility of the purchaser to contact an authorized dealer immediately after discovery of any defect, describe the nature of the problem, and provide a hull serial number, date of purchase, and name of selling dealer. The authorized dealer will notify Manufacturer, who is solely responsible for determining and authorizing in writing the remedial action(s) to be performed at either an authorized dealership chosen by Manufacturer or at the Manufacturer factory.

REGISTRATION & WARRANTY TRANSFER POLICY: Manufacturer provides each new boat owner with a product registration form which should be filled out and sent to info@oceanalexander.com within 30 days of purchase. Please complete and return the product registration form within 30 days of purchase of your boat in order to facilitate processing of warranty claims and for manufacturer notifications.









OCEAN ALEXANDER®

35P01 MOTOR YACHT

Standard Fuel: 5,040 Gals (19,078 L)

Displacement: 361,740 Lbs (30% Load)

PERFORMANCE DATA

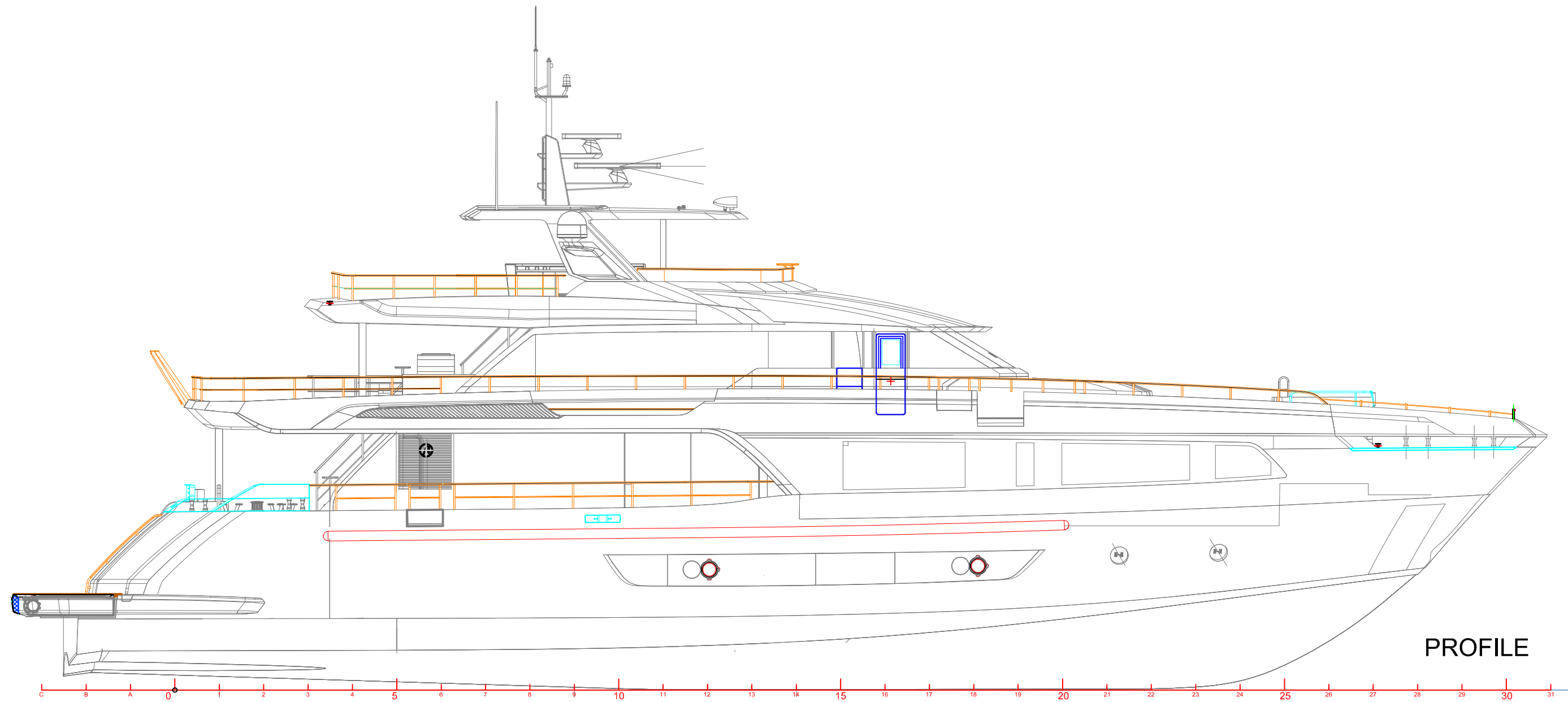
Engines: (2) MAN V12-2000

Rated@2000 BHP @2300 RPM's

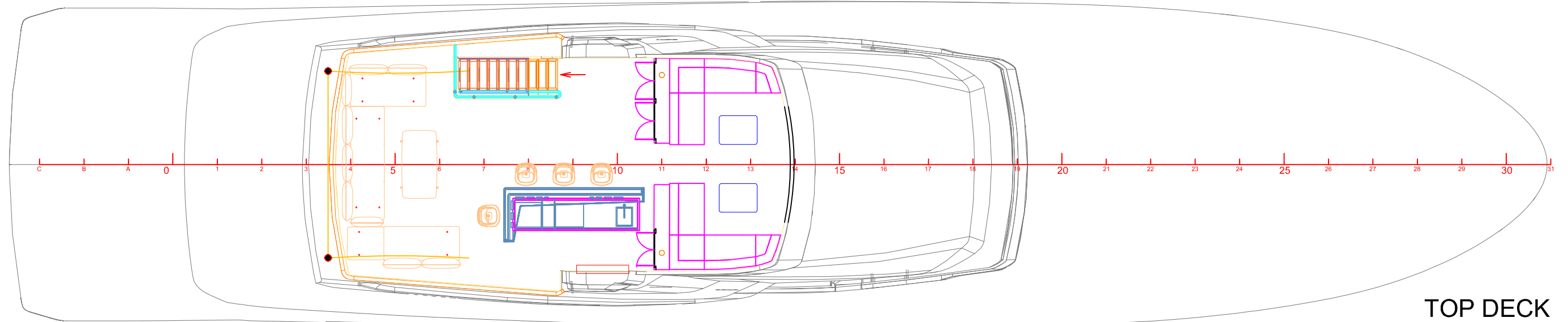
RPM	SPEED (KNOTS)	FUEL CONS. (ENGINES with single genset)	RANGE (NAUTICAL MILES)	HOURS @ SPEED
MAX	18	202.4	448	25
2200	16.3	154.4	532	33
2000	14.7	112.4	659	45
1800	14.0	84.4	836	60
1600	12.4	59.4	1052	85
1400	11.5	39.4	1471	128
1200	10.4	25.4	2064	198
1000	9.0	17.4	2607	290
800	7.7	11.4	3404	442

Fuel consumption is based on (2) engines with single genset at any given RPM. Speed and ranges are estimates based on engineering calculations. Actual performance will vary and be affected by water and weather conditions, load and conditions of boat, engines, and propellers. Speed will increase as fuel is consumed. All data is illustrative and is not warranted.

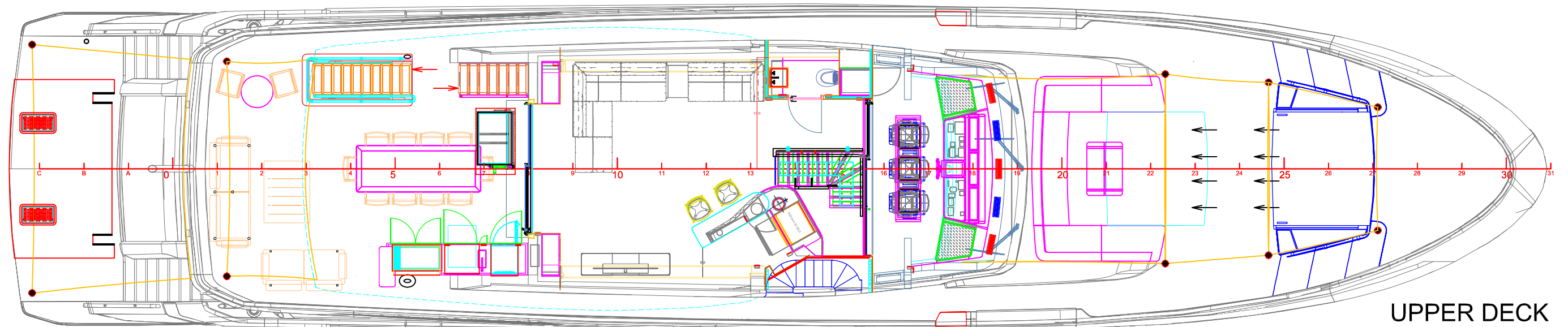
35P02 GA UNDER CONSTRUCTION, NOT FINALIZED.



35P02 GA UNDER CONSTRUCTION, NOT FINALIZED.

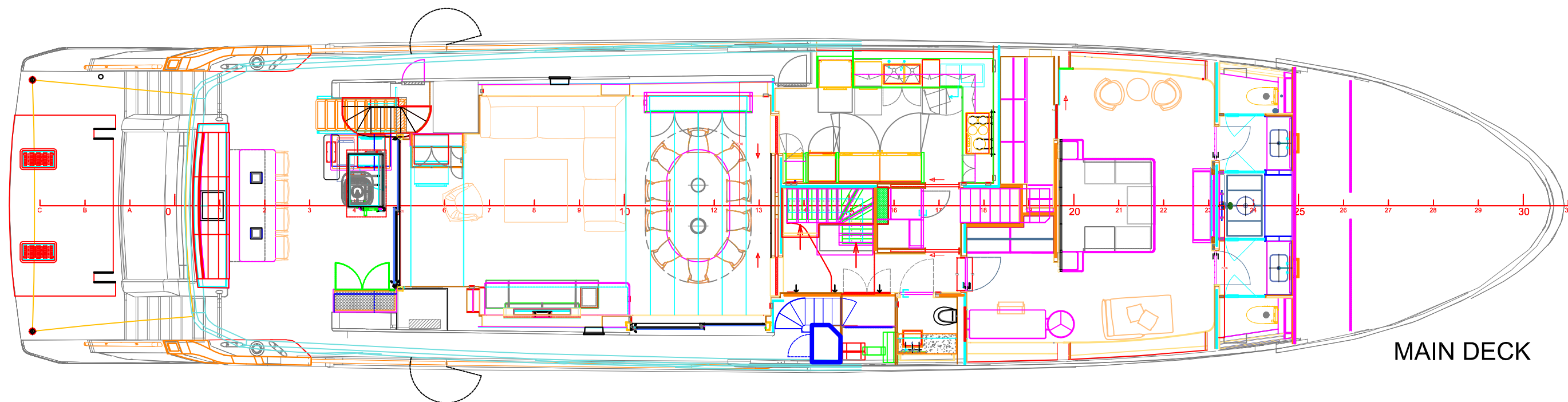


TOP DECK

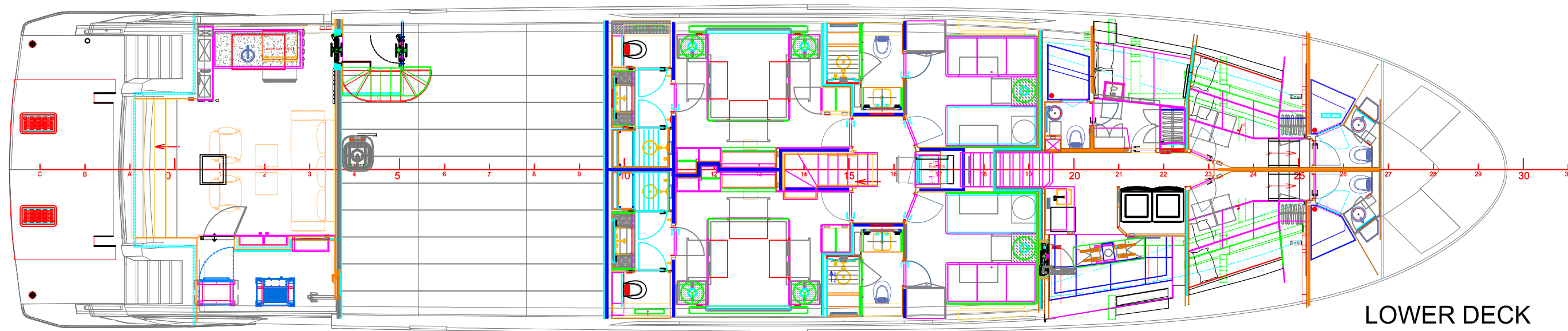


UPPER DECK

35P02 GA UNDER CONSTRUCTION, NOT FINALIZED.



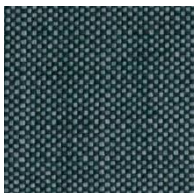
MAIN DECK



LOWER DECK



Corbello 60646
col.21



Zagora col.8271

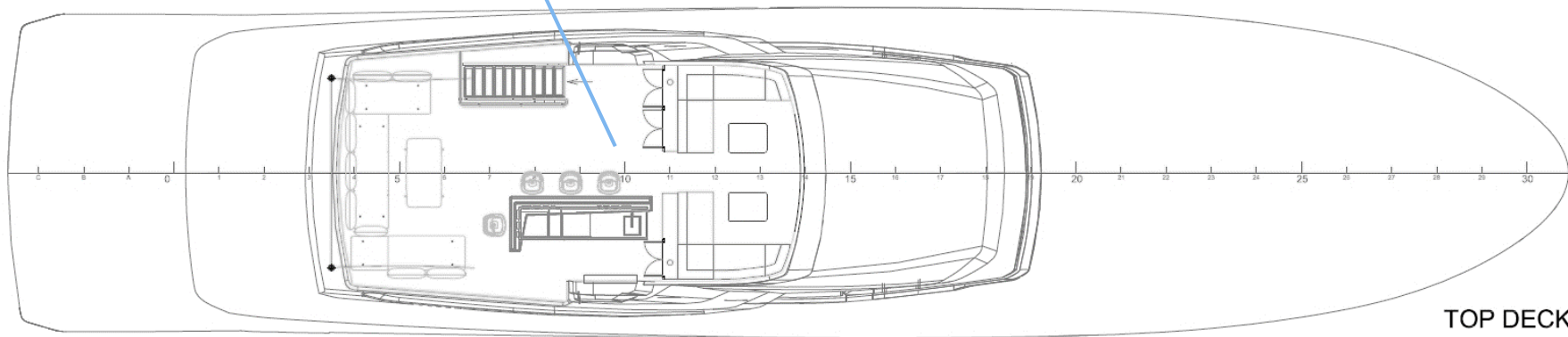
Fly Bridge

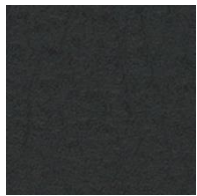
Corbello 60646 col.21

Seat pads

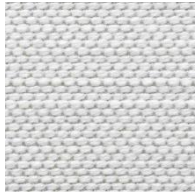
Zagora col.8271

Bar stools





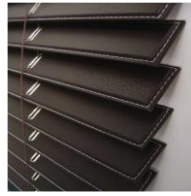
SC20
Inchiostro



Elicriso 17010



Tricot 60530
col. 2010



Skyvenetian
Leather col.217



Maria Flora "Riviera
Chenille" col. 20



SC32
Caolino

Bridge Deck

Elicriso col.17010

Seat pad

Pilot House

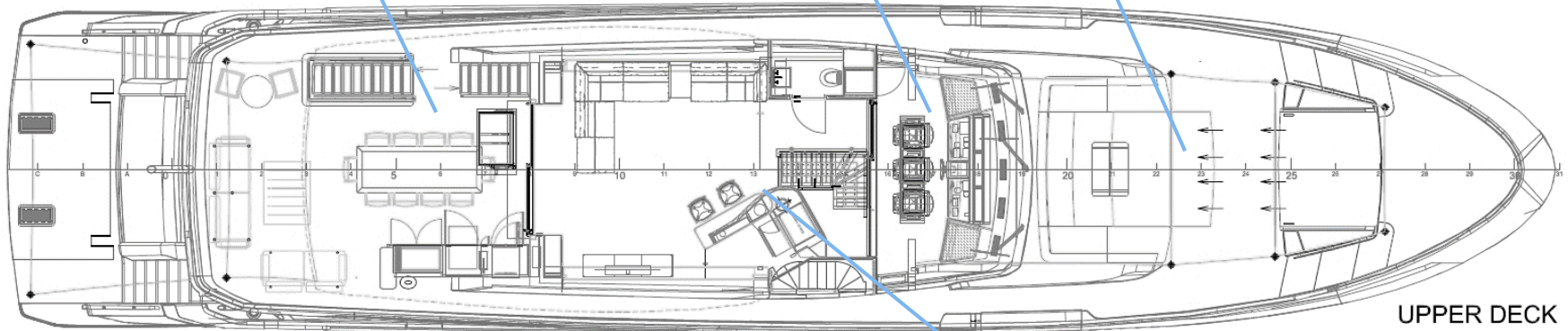
SC20 Inchiostro

Dash board, Steering wheel

FWD Deck

Tricot 60530 col. 2010

Sun pad



UPPER DECK

Skylounge

Maria Flora "Riviera Chenille" col. 20

Sofa

Skyvenetian Leather col.217

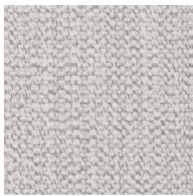
Venetian blind

SC32 "Caolino"

Bar stools



Destiny Ash
JHK2V



Giunco col. 94



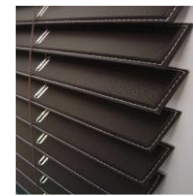
Mushroom
J1K6V



Georgette
SC32



Saddle EXTRA
"Corda"



Skyvenetian
Leather col.217



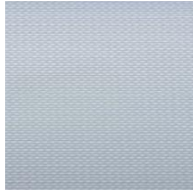
Sunmaster
AM13



Skyvenetian
Aluminium
col. A257



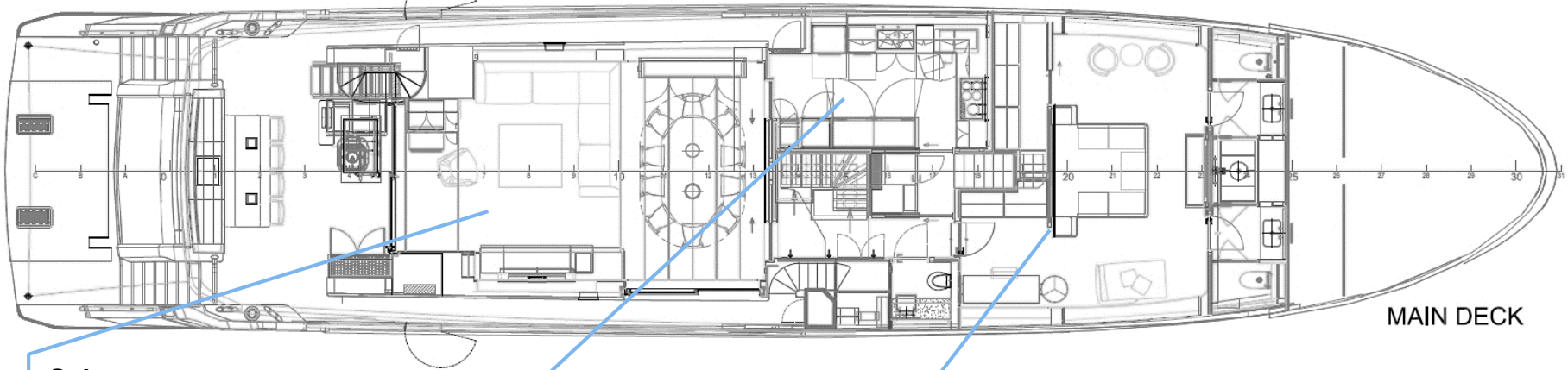
Zeus 3501
col.11



Sunmaster
SB45002



SC32
Caolino



MAIN DECK

Salon

Georgette SC32

Sofa

Destiny Ash JHK2V

Ceiling

Saddle EXTRA "Corda"

Dining chairs

Skyvenetian Leather col.217

Venetian blind

Sunmaster AM13

Privacy Roll

Galley

Skyvenetian Aluminium col. A257

Venetian blind

MSR

Zeus 3501 col.11

Roman blind

Sunmaster SB45002

Blackout Roll

SC32 "Caolino"

Vanity Stool

SC32 "Caolino"

Lounge chairs

Giunco col. 94

Head Board

Destiny Ash JHK2V

Ceiling

Mushroom J1K6V

Bed Base

35P02 Fabric Layout



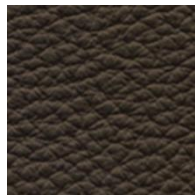
Rabat col.
92694



Ash col. 97



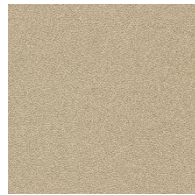
Zagora col.
9315



SC80
Bruno Havana



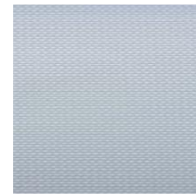
Ovation light
grey



SC32
Caolino



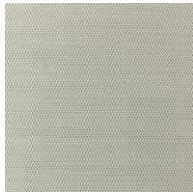
Skyvenetian
Leather col.217



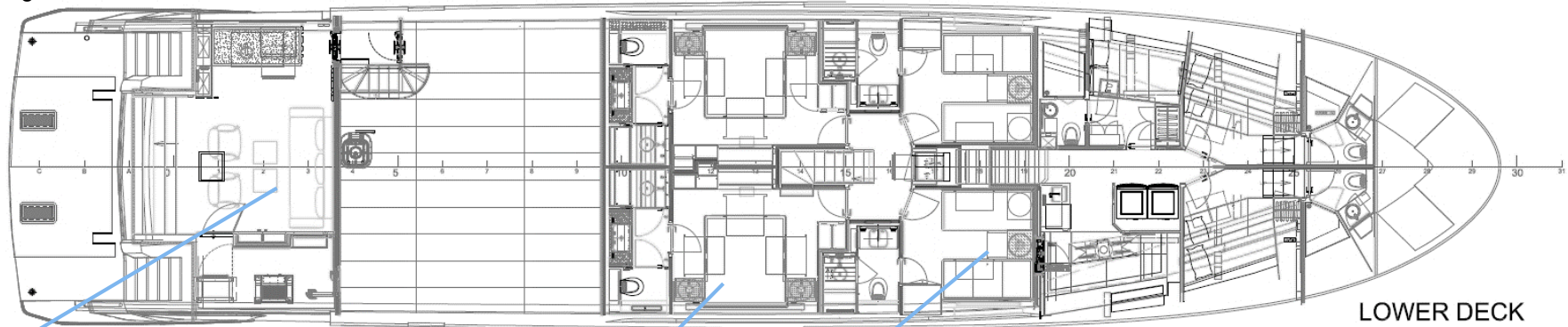
Sunmaster
SB45002



Maria Flora
"Spugna" col.20



Maria Flora
"Elicriso" col.2010



LOWER DECK

Beach Club

Maria Flora "Spugna"
col.20
Sofa
Maria Flora "Elicriso"
col.2010
Chair

VIP Str.

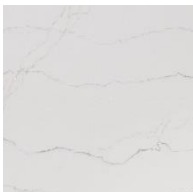
Rabat col. 92694
Head board
SC32 "Caolino"
Vanity stool
Skyvenetian Leather
col.217
Venetian blind
Sunmaster SB45002
Privacy roll

Ash col. 97
Window frame
Zagora col. 9315
Bed base
SC80 Bruno Havana
Vanity desk top
Ovation light grey
Night stand

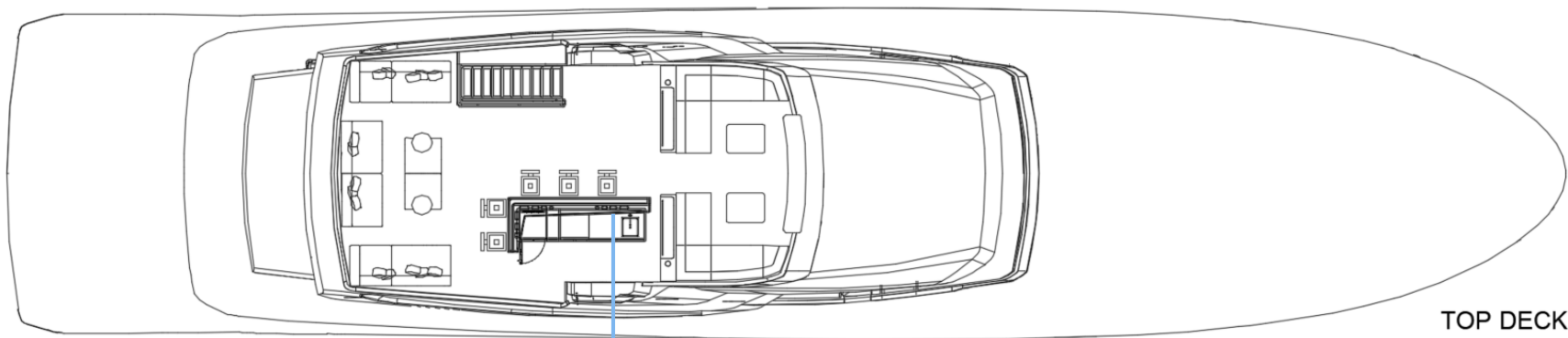
Twin Guest Str.

Skyvenetian Leather col.217
Venetian blind
Sunmaster SB45002
Privacy roll
Rabat col. 92694
Wall
Ash col. 97
Window frame

Zagora col. 9315
Bed base
Ovation light grey
Night stand & Closet



Cambria
Ella



TOP DECK

Fly Bridge
Ella
Table & Countertop

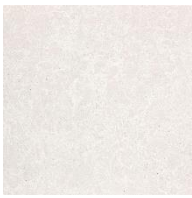
35P02 Stone Layout



Cambria
Ella



Cambria
Ironbridge

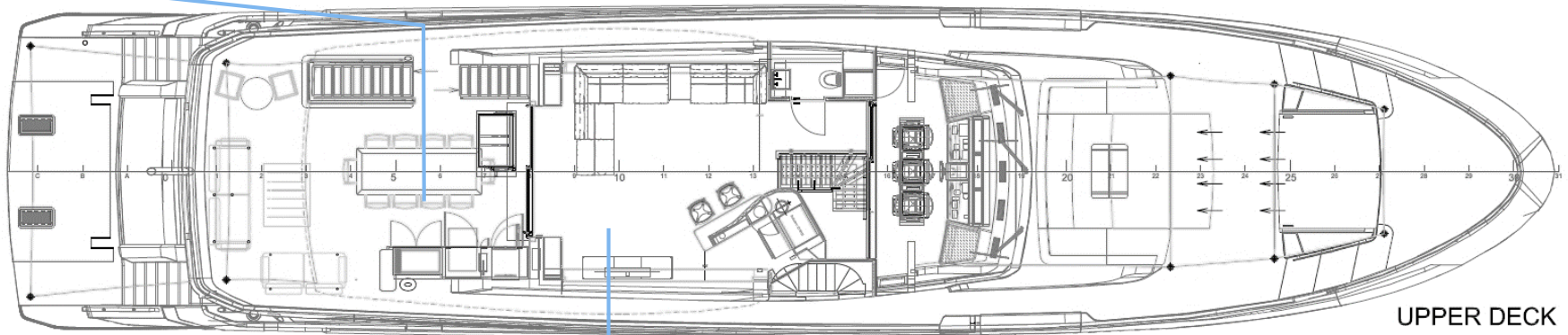


Cambria
Foggy City

Bridge

Ella

Countertop



UPPER DECK

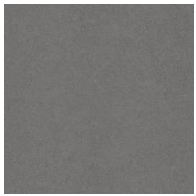
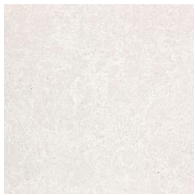
Skylounge & Dayhead

Ironbridge

Cabinet top

Foggy City

Dayhead sink



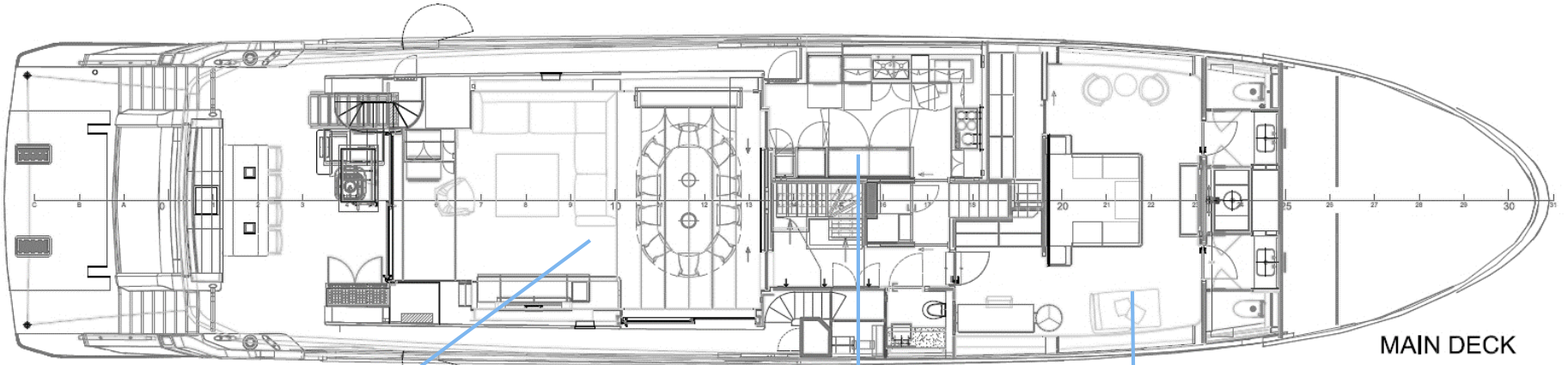
**Cambria
Swanbridge**

**Cambria
Foggy City**

**Cambria
Carrick**

**Cambria
White Cliff**

**Cambria
Black Rock**

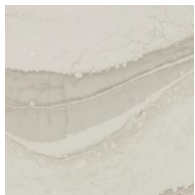


MAIN DECK

Salon & Dining
Swanbridge
 Cabinet doors, Dining table & Dayhead floor
Foggy City
 Dayhead sink & counter top

Galley
Carrick
 Countertop
White Cliff
 floor

Master Stateroom
Foggy City
 Cabinet tops & Head floor
Black Rock
 Head countertop & wall



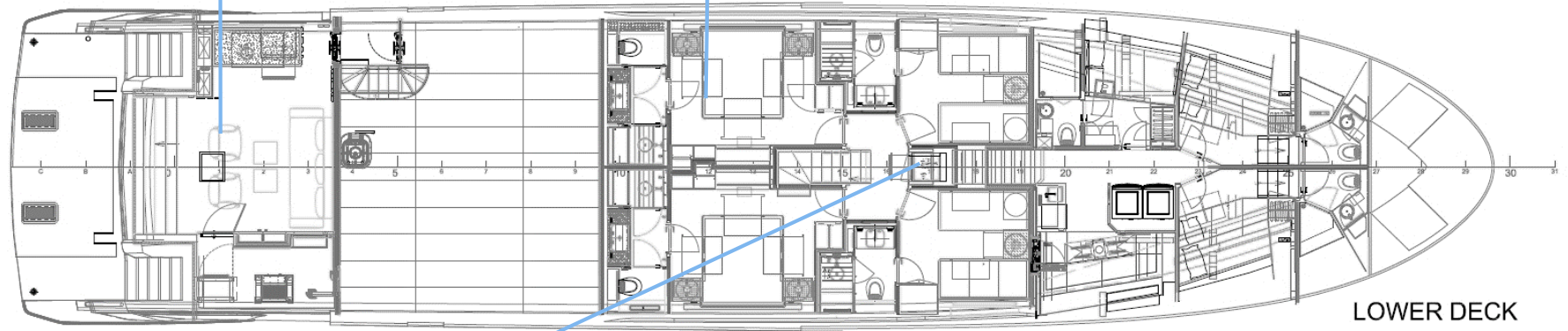
Cambria
Brittanica
Warm



Cambria
Seattle Rain



Cambria
Foggy City



Beach club
Brittanica Warm
Countertop

Port/ STBD VIP Stateroom
Seattle Rain
Head Countertop & Wall
Foggy City
Head Floor

Port/ STBD Guest Stateroom
Seattle Rain
Head Countertop & Wall
Foggy City
Head Floor

LOWER DECK